

## EGR2 Ab

Cat.#: AF0480  
Size: 100ul,200ul

Concn.: 1mg/ml  
Source: Rabbit

Mol.Wt.: 50kDa  
Clonality: Polyclonal

Application: WB 1:500-1:2000

Reactivity: Human,Mouse,Rat

Purification: The antiserum was purified by peptide affinity chromatography using SulfoLink™ Coupling Resin (Thermo Fisher Scientific).

Specificity: EGR2 Ab detects endogenous levels of EGR2.

Immunogen: A synthesized peptide derived from human EGR2.

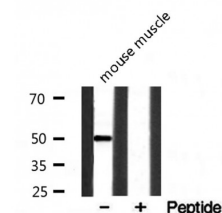
Uniprot: P11161

Description: The early growth response protein 2 is a transcription factor with three tandem C2H2-type zinc fingers. Mutations in this gene are associated with the autosomal dominant Charcot-Marie-Tooth disease, type 1.

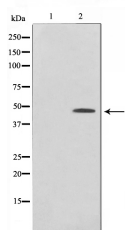
Subcellular Location: Nucleus.

Similarity: Belongs to the EGR C2H2-type zinc-finger protein family.

Storage Condition and Buffer: Rabbit IgG in phosphate buffered saline , pH 7.4, 150mM NaCl, 0.02% sodium azide and 50% glycerol.Store at -20 °C.Stable for 12 months from date of receipt.



Western blot analysis on mouse muscle lysate using EGR2 Ab



Western blot analysis on HeLa cell lysate using EGR2 Ab, The lane on the left is treated with the antigen-specific peptide.

**IMPORTANT:** For western blot, incubate membrane with diluted primary Ab in 5% w/v milk , 1X TBS, 0.1% Tween@20 at 4°C with gentle shaking, overnight.

For Research Use Only. Not for use in diagnostic and therapeutic procedures. Not for resale without express authorization.