

SUPT3H Ab

Cat.#: AF0498
Size: 100ul,200ul

Concn.: 1mg/ml
Source: Rabbit

Mol.Wt.: 50kDa
Clonality: Polyclonal

Application: WB 1:500-1:2000, IF/ICC 1:100-1:500

Reactivity: Human

Purification: The antiserum was purified by peptide affinity chromatography using SulfoLink™ Coupling Resin (Thermo Fisher Scientific).

Specificity: SUPT3H Ab detects endogenous levels of SUPT3H.

Immunogen: A synthesized peptide derived from human SUPT3H.

Uniprot: O75486

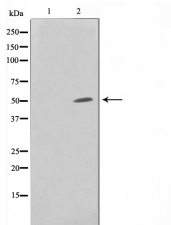
Description: SUPT3H Probable transcriptional activator. Component of the PCAF complex, at least composed of TADA2L/ADA2, SUPT3H, TADA3L/ADA3, TAF5L/PAF65-beta, TAF6L/PAF65- alpha, TAF10/TAFII30, TAF12/TAFII20, TAF9/TAFII31 and TRRAP. Associates with TAFII31 and GCN5L2. Component of the TFTC-HAT complex, at least composed of TAF5L, TAF6L, TADA3L, SUPT3H/SPT3, TAF2/TAFII150, TAF4/TAFII135, TAF5/TAFII100, GCN5L2/GCN5, TAF10 and TRRAP. Component of the STAGA transcription coactivator-HAT complex, at least composed of SUPT3H, GCN5L2, TAF5L, TAF6L, SUPT7L, TADA3L, TAD1L, TAF10, TAF12, TRRAP and TAF9.

Subcellular Location: Nucleus;

Tissue Specificity: Expressed in all tissues tested including pancreas, kidney, skeletal muscle, liver, lung, placenta, brain and heart.

Similarity: Belongs to the SPT3 family.

Storage Condition and Buffer: Rabbit IgG in phosphate buffered saline , pH 7.4, 150mM NaCl, 0.02% sodium azide and 50% glycerol.Store at -20 °C.Stable for 12 months from date of receipt.



Western blot analysis on HuvEc cell lysate using SUPT3H Ab. The lane on the left is treated with the antigen-specific peptide.



AF0498 staining HuvEc by IF/ICC. The sample were fixed with PFA and permeabilized in 0.1% Triton X-100, then blocked in 10% serum for 45 minutes at 25°C. The primary Ab was diluted at 1/200 and incubated with the sample for 1 hour at 37°C. An Alexa Fluor 594 conjugated goat anti-rabbit IgG (H+L) Ab, diluted at 1/600, was used as the secondary Ab.

IMPORTANT: For western blot, incubate membrane with diluted primary Ab in 5% w/v milk, 1X TBS, 0.1% Tween@20 at 4°C with gentle shaking, overnight.

For Research Use Only. Not for use in diagnostic and therapeutic procedures. Not for resale without express authorization.