

LASS4 Ab

Cat.#: AF0499
Size: 100ul,200ul

Concn.: 1mg/ml
Source: Rabbit

Mol.Wt.: 46kDa
Clonality: Polyclonal

Application: WB 1:500-1:2000 IHC 1:50-1:200, IF/ICC 1:100-1:500

Reactivity: Human

Purification: The antiserum was purified by peptide affinity chromatography using SulfoLink™ Coupling Resin (Thermo Fisher Scientific).

Specificity: LASS4 Ab detects endogenous levels of LASS4.

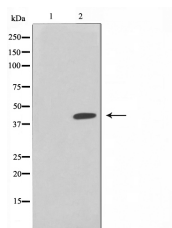
Immunogen: A synthesized peptide derived from human LASS4.

Uniprot: Q9HA82

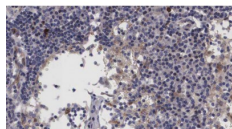
Description: Lass4 May be either a bona fide (dihydro)ceramide synthase or a modulator of its activity. When overexpressed in cells is involved in the production of sphingolipids containing different fatty acid donors (N-linked stearyl- (C18) or arachidoyl- (C20) ceramides) in a fumonisins B1-independent manner.

Subcellular Location: Endoplasmic reticulum;Nucleus;

Storage Condition and Buffer: Rabbit IgG in phosphate buffered saline , pH 7.4, 150mM NaCl, 0.02% sodium azide and 50% glycerol.Store at -20 °C.Stable for 12 months from date of receipt.



Western blot analysis on HuvEc cell lysate using LASS4 Ab, The lane on the left is treated with the antigen-specific peptide.





AF0499 staining HuvEc by IF/ICC. The sample were fixed with PFA and permeabilized in 0.1% Triton X-100, then blocked in 10% serum for 45 minutes at 25°C. The primary Ab was diluted at 1/200 and incubated with the sample for 1 hour at 37°C. An Alexa Fluor 594 conjugated goat anti-rabbit IgG (H+L) Ab, diluted at 1/600, was used as the secondary Ab.

IMPORTANT: For western blot, incubate membrane with diluted primary Ab in 5% w/v milk, 1X TBS, 0.1% Tween@20 at 4°C with gentle shaking, overnight.

For Research Use Only. Not for use in diagnostic and therapeutic procedures. Not for resale without express authorization.