

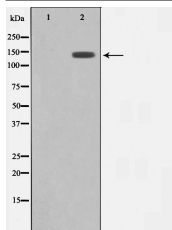
MEKKK 4 Ab

Cat.#: AF0512
Size: 100ul,200ul

Concn.: 1mg/ml
Source: Rabbit

Mol.Wt.: 142kDa
Clonality: Polyclonal

Application:	WB 1:500-1:2000 IF/ICC 1:100-1:500
Reactivity:	Human,Mouse
Purification:	The antiserum was purified by peptide affinity chromatography using SulfoLink™ Coupling Resin (Thermo Fisher Scientific).
Specificity:	MEKKK 4 Ab detects endogenous levels of MEKKK 4.
Immunogen:	A synthesized peptide derived from human MEKKK 4.
Uniprot:	O95819
Description:	a Ser/Thr kinase of the STE20 subfamily. May play a role in the response to environmental stress and cytokines such as TNF-alpha. May interact with the SH3 domain of the adapter proteins Nck. Binds, via its CNH regulatory domain, to the N-terminal region of SPG3A. Upregulated in primary tumors and tumor cell lines. Required for anchorage-independent growth and ras-dependent focus formation in multiple cell lines. 5 isoforms of the human protein are produced by alternative splicing.
Subcellular Location:	Cytoplasm.
Tissue Specificity:	Widely expressed. Isoform 5 is abundant in the brain. Isoform 4 is predominant in the liver, skeletal muscle and placenta.
Similarity:	Belongs to the protein kinase superfamily. STE Ser/Thr protein kinase family. STE20 subfamily.
Storage Condition and Buffer:	Rabbit IgG in phosphate buffered saline , pH 7.4, 150mM NaCl, 0.02% sodium azide and 50% glycerol.Store at -20 °C.Stable for 12 months from date of receipt.



Western blot analysis on HuvEc cell lysate using MEKKK 4 Ab. The lane on the left is treated with the antigen-specific peptide.



AF0512 staining HeLa cells by IF/ICC. The sample were fixed with PFA and permeabilized in 0.1% Triton X-100, then blocked in 10% serum for 45 minutes at 25°C. The primary Ab was diluted at 1/200 and incubated with the sample for 1 hour at 37°C. An Alexa Fluor 594 conjugated goat anti-rabbit IgG (H+L) Ab (Cat.# S0006), diluted at 1/600, was used as secondary Ab.

IMPORTANT: For western blot, incubate membrane with diluted primary Ab in 5% w/v milk, 1X TBS, 0.1% Tween@20 at 4°C with gentle shaking, overnight.

For Research Use Only. Not for use in diagnostic and therapeutic procedures. Not for resale without express authorization.