

DIRA1 Ab

Cat.#: AF0516
Size: 100ul,200ul

Concn.: 1mg/ml
Source: Rabbit

Mol.Wt.: 22kDa
Clonality: Polyclonal

Application: WB 1:500-1:2000, IF/ICC 1:100-1:500

Reactivity: Human,Mouse

Purification: The antiserum was purified by peptide affinity chromatography using SulfoLink™ Coupling Resin (Thermo Fisher Scientific).

Specificity: DIRA1 Ab detects endogenous levels of DIRA1.

Immunogen: A synthesized peptide derived from human DIRA1.

Uniprot: O95057

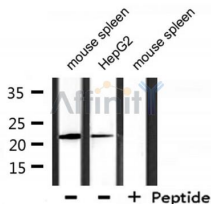
Description: DIRAS1 Displays low GTPase activity and exist predominantly in the GTP-bound form. Belongs to the small GTPase superfamily. Di-Ras family. Note: This description may include information from UniProtKB.

Subcellular Location: Cell membrane; Lipid-anchor; Cytoplasmic side

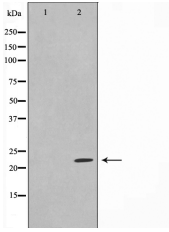
Tissue Specificity: Highly expressed in heart and brain.

Similarity: Belongs to the small GTPase superfamily. Di-Ras family.

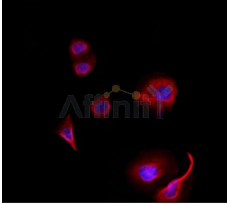
Storage Condition and Buffer: Rabbit IgG in phosphate buffered saline , pH 7.4, 150mM NaCl, 0.02% sodium azide and 50% glycerol.Store at -20 °C.Stable for 12 months from date of receipt.



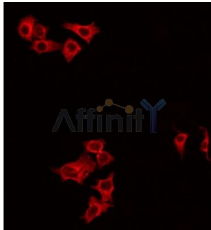
Western blot analysis of extracts from mouse spleen, HepG2, using DIRA1 Ab.



Western blot analysis on HeLa cell lysate using DIRA1 Ab, The lane on the left is treated with the antigen-specific peptide.



AF0516 staining HeLa by IF/ICC. The sample were fixed with PFA and permeabilized in 0.1% Triton X-100, then blocked in 10% serum for 45 minutes at 25°C. The primary Ab was diluted at 1/200 and incubated with the sample for 1 hour at 37°C. An Alexa Fluor 594 conjugated goat anti-rabbit IgG (H+L) Ab, diluted at 1/600, was used as the secondary Ab.



AF0516 staining HeLa by IF/ICC. The sample were fixed with PFA and permeabilized in 0.1% Triton X-100, then blocked in 10% serum for 45 minutes at 25°C. The primary Ab was diluted at 1/200 and incubated with the sample for 1 hour at 37°C. An Alexa Fluor 594 conjugated goat anti-rabbit IgG (H+L) Ab, diluted at 1/600, was used as the secondary Ab.

IMPORTANT: For western blot, incubate membrane with diluted primary Ab in 5% w/v milk, 1X TBS, 0.1% Tween@20 at 4°C with gentle shaking, overnight.

For Research Use Only. Not for use in diagnostic and therapeutic procedures. Not for resale without express authorization.