

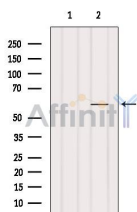
ZNF682 Ab

Cat.#: AF0555
Size: 100ul,200ul

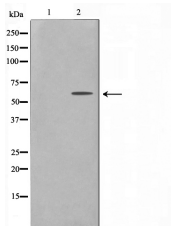
Concn.: 1mg/ml
Source: Rabbit

Mol.Wt.: 58kDa
Clonality: Polyclonal

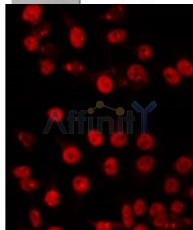
Application:	WB 1:500-1:2000, IF/ICC 1:100-1:500
Reactivity:	Human,Monkey
Purification:	The antiserum was purified by peptide affinity chromatography using SulfoLink™ Coupling Resin (Thermo Fisher Scientific).
Specificity:	ZNF682 Ab detects endogenous levels of ZNF682.
Immunogen:	A synthesized peptide derived from human ZNF682.
Uniprot:	O95780
Description:	ZNF682 May be involved in transcriptional regulation. Belongs to the krueppel C2H2-type zinc-finger protein family. 2 isoforms of the human protein are produced by alternative splicing. Note: This description may include information from UniProtKB.
Subcellular Location:	Nucleus;
Similarity:	Belongs to the krueppel C2H2-type zinc-finger protein family.
Storage Condition and Buffer:	Rabbit IgG in phosphate buffered saline , pH 7.4, 150mM NaCl, 0.02% sodium azide and 50% glycerol.Store at -20 °C.Stable for 12 months from date of receipt.



Western blot analysis of extracts from VERO, using ZNF682 Ab. The lane on the left was treated with blocking peptide.



Western blot analysis on COLO205 cell lysate using ZNF682 Ab. The lane on the left is treated with the antigen-specific peptide.



AF0555 staining COLO205 by IF/ICC. The sample were fixed with PFA and permeabilized in 0.1% Triton X-100, then blocked in 10% serum for 45 minutes at 25°C. The primary Ab was diluted at 1/200 and incubated with the sample for 1 hour at 37°C. An Alexa Fluor 594 conjugated goat anti-rabbit IgG (H+L) Ab, diluted at 1/600, was used as the secondary Ab.

IMPORTANT: For western blot, incubate membrane with diluted primary Ab in 5% w/v milk, 1X TBS, 0.1% Tween@20 at 4°C with gentle shaking, overnight.

For Research Use Only. Not for use in diagnostic and therapeutic procedures. Not for resale without express authorization.