

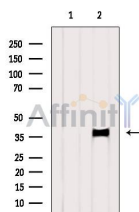
PRDM12 Ab

Cat.#: AF0566
Size: 100ul,200ul

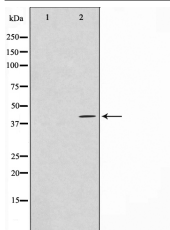
Concn.: 1mg/ml
Source: Rabbit

Mol.Wt.: 40kDa
Clonality: Polyclonal

Application:	WB 1:500-1:2000, IF/ICC 1:100-1:500
Reactivity:	Human,Mouse
Purification:	The antiserum was purified by peptide affinity chromatography using SulfoLink™ Coupling Resin (Thermo Fisher Scientific).
Specificity:	PRDM12 Ab detects endogenous levels of PRDM12.
Immunogen:	A synthesized peptide derived from human PRDM12.
Uniprot:	Q9H4Q4
Description:	PRDM12 May be involved in transcriptional regulation. The SET domain is degenerated, suggesting that it has lost methyltransferase activity.
Subcellular Location:	Nucleus.
Tissue Specificity:	Not found in adult tissues except in dorsal root ganglia.
Similarity:	Belongs to the class V-like SAM-binding methyltransferase superfamily.
Storage Condition and Buffer:	Rabbit IgG in phosphate buffered saline , pH 7.4, 150mM NaCl, 0.02% sodium azide and 50% glycerol.Store at -20 °C.Stable for 12 months from date of receipt.



Western blot analysis of extracts from Mouse liver, using PRDM12 Ab. The lane on the left was treated with blocking peptide.



Western blot analysis on HuvEc cell lysate using PRDM12 Ab. The lane on the left is treated with the antigen-specific peptide.



AF0566 staining HuvEc by IF/ICC. The sample were fixed with PFA and permeabilized in 0.1% Triton X-100, then blocked in 10% serum for 45 minutes at 25°C. The primary Ab was diluted at 1/200 and incubated with the sample for 1 hour at 37°C. An Alexa Fluor 594 conjugated goat anti-rabbit IgG (H+L) Ab, diluted at 1/600, was used as the secondary Ab.

IMPORTANT: For western blot, incubate membrane with diluted primary Ab in 5% w/v milk, 1X TBS, 0.1% Tween@20 at 4°C with gentle shaking, overnight.

For Research Use Only. Not for use in diagnostic and therapeutic procedures. Not for resale without express authorization.