

TBX22 Ab

Cat.#: AF0659
Size: 100ul, 200ul

Concn.: 1mg/ml
Source: Rabbit

Mol.Wt.: 58kDa
Clonality: Polyclonal

Application: WB 1:500-1:2000, IF/ICC 1:100-1:500

Reactivity: Human

Purification: The antiserum was purified by peptide affinity chromatography using SulfoLink™ Coupling Resin (Thermo Fisher Scientific).

Specificity: TBX22 Ab detects endogenous levels of TBX22.

Immunogen: A synthesized peptide derived from human TBX22.

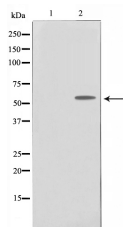
Uniprot: Q9Y458

Description: This gene is a member of a phylogenetically conserved family of genes that share a common DNA-binding domain, the T-box. T-box genes encode transcription factors involved in the regulation of developmental processes. Mutations in this gene have been associated with the inherited X-linked disorder, Cleft palate with ankyloglossia, and it is believed to play a major role in human palatogenesis.

Subcellular Location: Nucleus.

Tissue Specificity: Seems to be expressed at a low level.

Storage Condition and Buffer: Rabbit IgG in phosphate buffered saline , pH 7.4, 150mM NaCl, 0.02% sodium azide and 50% glycerol. Store at -20 °C. Stable for 12 months from date of receipt.



Western blot analysis on Jurkat cell lysate using TBX22 Ab, The lane on the left is treated with the antigen-specific peptide.



AF0659 staining HeLa by IF/ICC. The sample were fixed with PFA and permeabilized in 0.1% Triton X-100, then blocked in 10% serum for 45 minutes at 25°C. The primary Ab was diluted at 1/200 and incubated with the sample for 1 hour at 37°C. An Alexa Fluor 594 conjugated goat anti-rabbit IgG (H+L) Ab, diluted at 1/600, was used as the secondary Ab.

IMPORTANT: For western blot, incubate membrane with diluted primary Ab in 5% w/v milk, 1X TBS, 0.1% Tween@20 at 4°C with gentle shaking, overnight.

For Research Use Only. Not for use in diagnostic and therapeutic procedures. Not for resale without express authorization.