

RAD18 Ab

Cat.#: AF0669
Size: 100ul,200ul

Concn.: 1mg/ml
Source: Rabbit

Mol.Wt.: 56kDa
Clonality: Polyclonal

Application: WB 1:500-1:2000, IF/ICC 1:100-1:500

Reactivity: Human,Rat

Purification: The antiserum was purified by peptide affinity chromatography using SulfoLink™ Coupling Resin (Thermo Fisher Scientific).

Specificity: RAD18 Ab detects endogenous levels of RAD18.

Immunogen: A synthesized peptide derived from human RAD18.

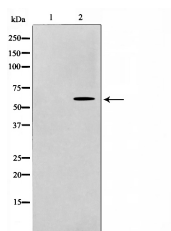
Uniprot: Q9NS91

Description: RAD18 a structural maintenance of chromosomes (SMC) protein involved in postreplication repair of UV-damaged DNA. Has ssDNA binding activity. Interacts with Rad6 through a conserved ring-finger motif. Rad6 is an ubiquitin-conjugating enzyme required for post-replication repair of damaged DNA.

Subcellular Location: Nucleus.

Similarity: Belongs to the RAD18 family.

Storage Condition and Buffer: Rabbit IgG in phosphate buffered saline , pH 7.4, 150mM NaCl, 0.02% sodium azide and 50% glycerol.Store at -20 °C.Stable for 12 months from date of receipt.



Western blot analysis on LOVO cell lysate using RAD18 Ab, The lane on the left is treated with the antigen-specific peptide.



AF0669 staining LOVO by IF/ICC. The sample were fixed with PFA and permeabilized in 0.1% Triton X-100, then blocked in 10% serum for 45 minutes at 25°C. The primary Ab was diluted at 1/200 and incubated with the sample for 1 hour at 37°C. An Alexa Fluor 594 conjugated goat anti-rabbit IgG (H+L) Ab, diluted at 1/600, was used as the secondary Ab.

IMPORTANT: For western blot, incubate membrane with diluted primary Ab in 5% w/v milk, 1X TBS, 0.1% Tween@20 at 4°C with gentle shaking, overnight.

For Research Use Only. Not for use in diagnostic and therapeutic procedures. Not for resale without express authorization.