

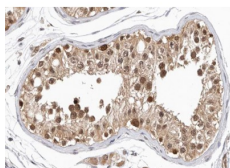
GASP1 Ab

Cat.#: AF0712
Size: 100ul,200ul

Concn.: 1mg/ml
Source: Rabbit

Mol.Wt.: 156kDa
Clonality: Polyclonal

Application:	IHC 1:50-1:200 IF/ICC 1:100-1:500
Reactivity:	Human
Purification:	The antiserum was purified by peptide affinity chromatography using SulfoLink™ Coupling Resin (Thermo Fisher Scientific).
Specificity:	GASP1 Ab detects endogenous levels of GASP1.
Immunogen:	A synthesized peptide derived from human GASP1.
Uniprot:	Q5JY77
Description:	GPRASP1 May modulate lysosomal sorting and functional down- regulation of a variety of G-protein coupled receptors. Targets receptors for degradation in lysosomes. Belongs to the GPRASP family. Interacts with cytoplasmic tails of a variety of G- protein coupled receptors such as D2 dopamine receptor/DRD2, delta opioid receptor/OPRD1, beta-2 adrenergic receptor/ADRB2 and D4 dopamine receptor/DRD4.
Subcellular Location:	Cytoplasm.
Tissue Specificity:	Expressed in the brain, with lower expression in medulla, spinal cord and substantia nigra.
Similarity:	Belongs to the GPRASP family.
Storage Condition and Buffer:	Rabbit IgG in phosphate buffered saline , pH 7.4, 150mM NaCl, 0.02% sodium azide and 50% glycerol.Store at -20 °C.Stable for 12 months from date of receipt.



AF0712 at 1/100 staining human testis tissue sections by IHC-P. The tissue was formaldehyde fixed and a heat mediated antigen retrieval step in citrate buffer was performed. The tissue was then blocked and incubated with the Ab for 1.5 hours at 22°C. An HRP conjugated goat anti-rabbit Ab was used as the secondary.



AF0712 staining HeLa by IF/ICC. The sample were fixed with PFA and permeabilized in 0.1% Triton X-100, then blocked in 10% serum for 45 minutes at 25°C. The primary Ab was diluted at 1/200 and incubated with the sample for 1 hour at 37°C. An Alexa Fluor 594 conjugated goat anti-rabbit IgG (H+L) Ab, diluted at 1/600, was used as the secondary Ab.

IMPORTANT: For western blot, incubate membrane with diluted primary Ab in 5% w/v milk, 1X TBS, 0.1% Tween@20 at 4°C with gentle shaking, overnight.

For Research Use Only. Not for use in diagnostic and therapeutic procedures. Not for resale without express authorization.