

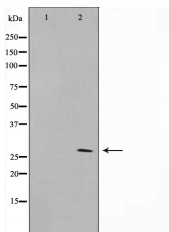
## ERD23 Ab

Cat.#: AF0758  
Size: 100ul,200ul

Concn.: 1mg/ml  
Source: Rabbit

Mol.Wt.: 28kDa  
Clonality: Polyclonal

Application:	WB 1:500-1:2000, IF/ICC 1:100-1:500
Reactivity:	Human,Mouse
Purification:	The antiserum was purified by peptide affinity chromatography using SulfoLink™ Coupling Resin (Thermo Fisher Scientific).
Specificity:	ERD23 Ab detects endogenous levels of ERD23.
Immunogen:	A synthesized peptide derived from human ERD23.
Uniprot:	O43731
Description:	KDEL3 Required for the retention of luminal endoplasmic reticulum proteins. Determines the specificity of the luminal ER protein retention system. Also required for normal vesicular traffic through the Golgi. This receptor recognizes K-D-E-L. Belongs to the ERD2 family. 2 isoforms of the human protein are produced by alternative splicing. Note: This description may include information from UniProtKB.
Subcellular Location:	Endoplasmic reticulum membrane; Multi-pass membrane protein.
Similarity:	Belongs to the ERD2 family.
Storage Condition and Buffer:	Rabbit IgG in phosphate buffered saline , pH 7.4, 150mM NaCl, 0.02% sodium azide and 50% glycerol.Store at -20 °C.Stable for 12 months from date of receipt.



Western blot analysis on NIH-3T3 cell lysate using ERD23 Ab



AF0758 staining NIH-3T3 by IF/ICC. The sample were fixed with PFA and permeabilized in 0.1% Triton X-100, then blocked in 10% serum for 45 minutes at 25°C. The primary Ab was diluted at 1/200 and incubated with the sample for 1 hour at 37°C. An Alexa Fluor 594 conjugated goat anti-rabbit IgG (H+L) Ab, diluted at 1/600, was used as the secondary Ab.

**IMPORTANT:** For western blot, incubate membrane with diluted primary Ab in 5% w/v milk , 1X TBS, 0.1% Tween@20 at 4°C with gentle shaking, overnight.

For Research Use Only. Not for use in diagnostic and therapeutic procedures. Not for resale without express authorization.