

Phospho-NMDAR1(Ser897) Ab

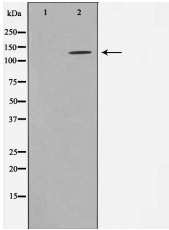
Cat.#: AF0823
Size: 100ul,200ul

Concn.: 1mg/ml
Source: Rabbit

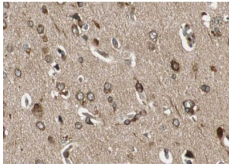
Mol.Wt.: 120kDa
Clonality: Polyclonal

| | |
|-------------------------------|---|
| Application: | WB 1:500-1:2000 IHC 1:50-1:200 |
| Reactivity: | Human,Mouse,Rat |
| Purification: | The Ab is from purified rabbit serum by affinity purification via sequential chromatography on phospho- and non-phospho-peptide affinity columns. |
| Specificity: | Phospho-NMDAR1(Ser897) Ab detects endogenous levels of NMDAR1 only when phosphorylated at Sersine 897. |
| Immunogen: | A synthesized peptide derived from human NMDAR1 around the phosphorylation site of Sersine 897. |
| Uniprot: | Q05586 |
| Description: | The protein encoded by this gene is a critical subunit of N-methyl-D-aspartate receptors, members of the glutamate receptor channel superfamily which are heteromeric protein complexes with multiple subunits arranged to form a ligand-gated ion channel. These subunits play a key role in the plasticity of synapses, which is believed to underlie memory and learning. The gene consists of 21 exons and is alternatively spliced, producing transcript variants differing in the C-terminus. Although the sequence of exon 5 is identical in human and rat, the alternative exon 5 splicing in rat has yet to be demonstrated in human. Cell-specific factors are thought to control expression of different isoforms, possibly contributing to the functional diversity of the subunits |
| Subcellular Location: | Cell membrane. Cell junction > synapse > postsynaptic cell membrane. Cell junction > synapse > postsynaptic cell membrane > postsynaptic density. Enriched in post-synaptic plasma membrane and post-synaptic densities. |
| Similarity: | A hydrophobic region that gives rise to the prediction of a transmembrane span does not cross the membrane, but is part of a discontinuously helical region that dips into the membrane and is probably part of the pore and of the selectivity filter.Belongs to the glutamate-gated ion channel (TC 1.A.10.1) family. NR1/GRIN1 subfamily. [View classification] |
| Storage Condition and Buffer: | Rabbit IgG in phosphate buffered saline , pH 7.4, 150mM NaCl, 0.02% sodium azide and 50% glycerol.Store at -20 |

°C.Stable for 12 months from date of receipt.



Western blot analysis on K562 cell lysate using Phospho-NMDAR1(Ser897) Ab, The lane on the left is treated with the antigen-specific peptide.



AF0823 at 1/100 staining human brain tissue sections by IHC-P. The tissue was formaldehyde fixed and a heat mediated antigen retrieval step in citrate buffer was performed. The tissue was then blocked and incubated with the Ab for 1.5 hours at 22°C. An HRP conjugated goat anti-rabbit Ab was used as the secondary.

IMPORTANT: For western blot, incubate membrane with diluted primary Ab in 5% w/v milk , 1X TBS, 0.1% Tween@20 at 4°C with gentle shaking, overnight.

For Research Use Only. Not for use in diagnostic and therapeutic procedures. Not for resale without express authorization.