

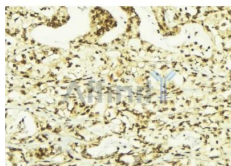
Histone H2A Ab

Cat.#: AF0875
Size: 100ul,200ul

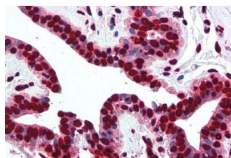
Concn.: 1mg/ml
Source: Rabbit

Mol.Wt.: 14kDa
Clonality: Polyclonal

Application:	IHC 1:50-1:200
Reactivity:	Human,Mouse,Rat
Purification:	The antiserum was purified by peptide affinity chromatography using SulfoLink™ Coupling Resin (Thermo Fisher Scientific).
Specificity:	Histone H2A Ab detects endogenous levels of Histone H2A.
Immunogen:	A synthesized peptide derived from human Histone H2A.
Uniprot:	P04908/P0C058/P20671/Q16777/Q6FI13/Q7L7L0/Q8IUE6/Q93077/Q96QV6/Q99878
Description:	Variant histones H2A are synthesized throughout the cell cycle and are very different from classical S-phase regulated H2A. The exact function of variant histones H2A is not known.
Subcellular Location:	Nucleus. Chromosome.
Similarity:	Belongs to the histone H2A family.
Storage Condition and Buffer:	Rabbit IgG in phosphate buffered saline , pH 7.4, 150mM NaCl, 0.02% sodium azide and 50% glycerol.Store at -20 °C.Stable for 12 months from date of receipt.



AF0875 at 1/100 staining Human breast cancer tissue by IHC-P. The sample was formaldehyde fixed and a heat mediated antigen retrieval step in citrate buffer was performed. The sample was then blocked and incubated with the Ab for 1.5 hours at 22°C. An HRP conjugated goat anti-rabbit Ab was used as the secondary.



AF0875 at 1/100 staining human prostate cancer tissues sections by IHC-P. The tissue was formaldehyde fixed and a heat mediated antigen retrieval step in citrate buffer was performed. The tissue was then blocked and incubated with the Ab for 1.5 hou

IMPORTANT: For western blot, incubate membrane with diluted primary Ab in 5% w/v milk , 1X TBS, 0.1% Tween@20 at 4°C with gentle shaking, overnight.

For Research Use Only. Not for use in diagnostic and therapeutic procedures. Not for resale without express authorization.