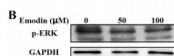


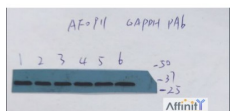
GAPDH Ab

Cat.#: AF0911	Concn.: 1mg/ml	Mol.Wt.: 37KD
Size: 50ul,100ul,200ul,1ml	Source: Rabbit	Clonality: Polyclonal

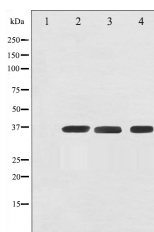
Application:	WB: 1:5000~1:50000
Reactivity:	Human,Monkey
Purification:	The antiserum was purified by peptide affinity chromatography using SulfoLink™ Coupling Resin (Thermo Fisher Scientific).
Specificity:	GAPDH Ab detects endogenous levels of total GAPDH protein from human and monkey.Is unsuitable for MOUSE and RAT,not yet tested in other species.
Immunogen:	A synthesized peptide derived from human GAPDH.
Uniprot:	P04406
Description:	Glyceraldehyde 3 phosphate dehydrogenase (GAPDH) is well known as one of the key enzymes involved in glycolysis. GAPDH is constitutively abundant expressed in almost cell types at high levels, therefore antibodies against GAPDH are useful as loading controls for Western Blotting. Some pathology factors, such as hypoxia and diabetes, increased or decreased GAPDH expression in certain cell types.
Subcellular Location:	Cytoplasm > cytosol. Nucleus. Cytoplasm > perinuclear region. Membrane. Translocates to the nucleus following S-nitrosylation and interaction with SIAH1, which contains a nuclear localization signal (By similarity). Postnuclear and Perinuclear regions.
Similarity:	The [IL]-x-C-x-x-[DE] motif is a proposed target motif for cysteine S-nitrosylation mediated by the iNOS-S100A8/A9 transnitrosylase complex.Belongs to the glyceraldehyde-3-phosphate dehydrogenase family.
Storage Condition and Buffer:	Rabbit IgG in phosphate buffered saline, pH 7.4, 150mM NaCl, 0.02% sodium azide and 50% glycerol.



Emodin targets mitochondrial cyclophilin D to induce apoptosis in HepG2 cells. Ling Zhang, Dian He, Kun Li, Hongli Liu, Baitao Wang, Lifang Zheng*, Jiazhong Li



Western blot analysis of GAPDH Ab expression in JK, HeLa, 293, A549, cos7 and MCF-7 cells lysates.



Western blot analysis of HeLa (1), Jurket (2), and COS-7 (3) with GAPDH Ab (1:50000). The lane on the left is treated with the antigen-specific peptide.

IMPORTANT: For western blot, incubate membrane with diluted primary Ab in 5% w/v milk, 1X TBS, 0.1% Tween@20 at 4°C with gentle shaking, overnight.

For Research Use Only. Not for use in diagnostic and therapeutic procedures. Not for resale without express authorization.