

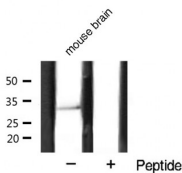
Cyclin D1 Ab

Cat.#: AF0931
Size: 100ul,200ul

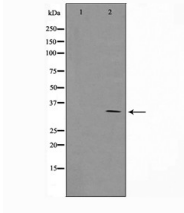
Concn.: 1mg/ml
Source: Rabbit

Mol.Wt.: 33kDa
Clonality: Polyclonal

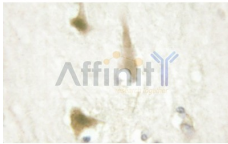
| | |
|-------------------------------|--|
| Application: | WB 1:500-1:2000 IHC 1:50-1:200 IF/ICC 1:100-1:500 |
| Reactivity: | Human,Mouse,Rat |
| Purification: | The antiserum was purified by peptide affinity chromatography using SulfoLink™ Coupling Resin (Thermo Fisher Scientific). |
| Specificity: | Cyclin D1 Ab detects endogenous levels of total Cyclin D1. |
| Immunogen: | A synthesized peptide derived from human Cyclin D1. |
| Uniprot: | P24385 |
| Description: | The protein encoded by this gene belongs to the highly conserved cyclin family, whose members are characterized by a dramatic periodicity in protein abundance throughout the cell cycle. Cyclins function as regulators of CDK kinases. Different cyclins exhibit distinct expression and degradation patterns which contribute to the temporal coordination of each mitotic event. |
| Subcellular Location: | Nucleus. |
| Similarity: | Belongs to the cyclin family. Cyclin D subfamily. |
| Storage Condition and Buffer: | Rabbit IgG in phosphate buffered saline , pH 7.4, 150mM NaCl, 0.02% sodium azide and 50% glycerol.Store at -20 °C.Stable for 12 months from date of receipt. |



estern blot analysis of Cyclin D1 expression in mouse brain tissue lysates,The lane on the right is treated with the antigen-specific peptide.



Western blot analysis of Cyclin D1 expression in MCF7 whole cell lysates, The lane on the left is treated with the antigen-specific peptide.



AF0931 at 1/200 staining tissue sections by IHC-P.



AF0931 staining A-431 cells by IF/ICC. The sample were fixed with PFA and permeabilized in 0.1% Triton X-100, then blocked in 10% serum for 45 minutes at 25°C. The primary Ab was diluted at 1/200 and incubated with the sample for 1 hour at 37°C. An Alexa Fluor 594 conjugated goat anti-rabbit IgG (H+L) Ab (Cat.# S0006), diluted at 1/600, was used as secondary Ab.

IMPORTANT: For western blot, incubate membrane with diluted primary Ab in 5% w/v milk, 1X TBS, 0.1% Tween@20 at 4°C with gentle shaking, overnight.

For Research Use Only. Not for use in diagnostic and therapeutic procedures. Not for resale without express authorization.