

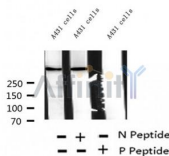
Phospho-RYR2(Ser2814) Ab

Cat.#: AF2303
 Size: 100ul,200ul

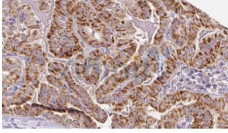
Concn.: 1mg/ml
 Source: Rabbit

Mol.Wt.: 564 kDa
 Clonality: Polyclonal

- Application:** WB 1:500-1:2000, IHC 1:50-1:200
- Reactivity:** Human,Dog
- Purification:** The Ab is from purified rabbit serum by affinity purification via sequential chromatography on phospho- and non-phospho-peptide affinity columns.
- Specificity:** Phospho-RYR2(Ser2814) Ab detects endogenous levels of RYR2.
- Immunogen:** A synthesized peptide derived from human RYR2 around the phosphorylation site of Ser2814.
- Uniprot:** Q92736
- Subcellular Location:** Sarcoplasmic reticulum membrane. Membrane. The number of predicted transmembrane domains varies between orthologs, but both N-terminus and C-terminus seem to be cytoplasmic.
- Tissue Specificity:** Detected in heart muscle (at protein level). Heart muscle, brain (cerebellum and hippocampus) and placenta.
- Similarity:** The calcium release channel activity resides in the C-terminal region while the remaining part of the protein resides in the cytoplasm.Belongs to the ryanodine receptor (TC 1.A.3.1) family. RYR2 subfamily. [View classification]
- Storage Condition and Buffer:** Rabbit IgG in phosphate buffered saline , pH 7.4, 150mM NaCl, 0.02% sodium azide and 50% glycerol.Store at -20 °C.Stable for 12 months from date of receipt.



Western blot analysis of extracts of A431 cells, using Phospho-RYR2(Ser2814) Ab.



AF2303 at 1/100 staining Human thyroid cancer tissue by IHC-P. The sample was formaldehyde fixed and a heat mediated antigen retrieval step in citrate buffer was performed. The sample was then blocked and incubated with the Ab for 1.5 hours at 22°C. An HRP conjugated goat anti-rabbit Ab was used as the secondary.

IMPORTANT: For western blot, incubate membrane with diluted primary Ab in 5% w/v milk , 1X TBS, 0.1% Tween@20 at 4°C with gentle shaking, overnight.

For Research Use Only. Not for use in diagnostic and therapeutic procedures. Not for resale without express authorization.