

Acetyl-FKHR(K294) Ab

Cat.#: AF2305
 Size: 200ul,100ul

Concn.: 1mg/ml
 Source: Rabbit

Mol.Wt.: 70kDa
 Clonality: Polyclonal

Application: WB 1:500-1:2000, IHC 1:50-1:200

Reactivity: Human,Mouse,Rat

Purification: The antiserum was purified by peptide affinity chromatography using SulfoLink™ Coupling Resin (Thermo Fisher Scientific).

Specificity: AC-FKHR(K294) Ab detects endogenous levels of AC-FKHR(K294).

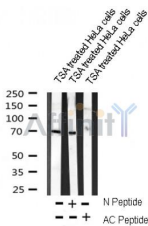
Immunogen: A synthesized peptide derived from human AC-FKHR(K294).

Uniprot: Q12778

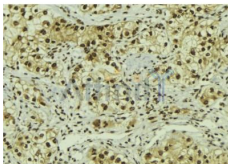
Subcellular Location: Cytoplasm. Nucleus. Shuttles between cytoplasm and nucleus.

Tissue Specificity: Ubiquitous.

Storage Condition and Buffer: Rabbit IgG in phosphate buffered saline , pH 7.4, 150mM NaCl, 0.02% sodium azide and 50% glycerol.Store at -20 °C.Stable for 12 months from date of receipt.



Western blot analysis on TSA treated HeLa cells lysate using AC-FKHR(K294) Ab



AF2305 at 1/100 staining Human breast cancer tissue by IHC-P. The sample was formaldehyde fixed and a heat mediated antigen retrieval step in citrate buffer was performed. The sample was then blocked and incubated with the Ab for 1.5 hours at 22°C. An HRP conjugated goat anti-rabbit Ab was used as the secondary.

IMPORTANT: For western blot, incubate membrane with diluted primary Ab in 5% w/v milk , 1X TBS, 0.1% Tween@20 at 4°C with gentle shaking,

overnight.

For Research Use Only. Not for use in diagnostic and therapeutic procedures. Not for resale without express authorization.