

---

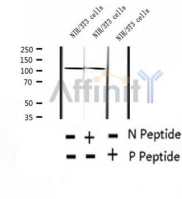
## Phospho-PKD2(Ser812) Ab

Cat.#: AF2313  
Size: 100ul,200ul

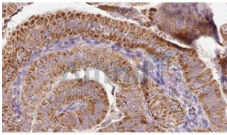
Concn.: 1mg/ml  
Source: Rabbit

Mol.Wt.: 115kDa  
Clonality: Polyclonal

Application:	WB 1:500-1:2000, IHC 1:50-1:200
Reactivity:	Human,Mouse,Rat
Purification:	The Ab is from purified rabbit serum by affinity purification via sequential chromatography on phospho- and non-phospho-peptide affinity columns.
Specificity:	Phospho-PKD2(Ser812) Ab detects endogenous levels of PKD2.
Immunogen:	A synthesized peptide derived from human PKD2 around the phosphorylation site of Ser812.
Uniprot:	Q13563
Subcellular Location:	Membrane. Endoplasmic reticulum.
Tissue Specificity:	Detected in fetal and adult kidney (PubMed:10770959). Detected at the thick ascending limb of the loop of Henle, at distal tubules, including the distal convoluted tubule and cortical collecting tubules, with weak staining of the collecting duct (PubMed:10770959). Detected on placenta syncytiotrophoblasts (at protein level) (PubMed:26269590). Strongly expressed in ovary, fetal and adult kidney, testis, and small intestine. Not detected in peripheral leukocytes.
Similarity:	The C-terminal coiled-coil domain is involved in oligomerization and the interaction with PKD1 (PubMed:18694932, PubMed:19556541). The isolated coiled-coil domain forms a homotrimer in vitro; the homotrimer interacts with a single PKD1 chain (PubMed:19556541). The coiled-coil domain binds calcium and undergoes a calcium-induced conformation change (in vitro) (PubMed:18694932).Belongs to the polycystin family.
Storage Condition and Buffer:	Rabbit IgG in phosphate buffered saline , pH 7.4, 150mM NaCl, 0.02% sodium azide and 50% glycerol.Store at -20 °C.Stable for 12 months from date of receipt.



Western blot analysis of extracts of NIH/3T3 cells, using Phospho-PKD2(Ser812) Ab.



AF2313 at 1/100 staining Human thyroid cancer tissue by IHC-P. The sample was formaldehyde fixed and a heat mediated antigen retrieval step in citrate buffer was performed. The sample was then blocked and incubated with the Ab for 1.5 hours at 22°C. An HRP conjugated goat anti-rabbit Ab was used as the secondary.

**IMPORTANT:** For western blot, incubate membrane with diluted primary Ab in 5% w/v milk , 1X TBS, 0.1% Tween@20 at 4°C with gentle shaking, overnight.

For Research Use Only. Not for use in diagnostic and therapeutic procedures. Not for resale without express authorization.