

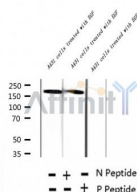
Phospho-Afadin (Ser1799) Ab

Cat.#: AF2315
Size: 100ul,200ul

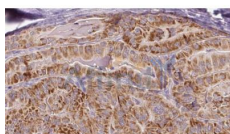
Concn.: 1mg/ml
Source: Rabbit

Mol.Wt.: 205kDa
Clonality: Polyclonal

Application:	WB 1:500-1:2000, IHC 1:50-1:200
Reactivity:	Human
Purification:	The Ab is from purified rabbit serum by affinity purification via sequential chromatography on phospho- and non-phospho-peptide affinity columns.
Specificity:	Phospho-Afadin (Ser1799) Ab detects endogenous levels of Afadin.
Immunogen:	A synthesized peptide derived from human Afadin around the phosphorylation site of Ser1799.
Uniprot:	P55196
Subcellular Location:	Cell junction > adherens junction. Not found at cell-matrix AJs.
Similarity:	The PDZ/DHR domain interacts with the C-terminus of nectin and the Pro-rich C-terminal domain interacts with F-actin.
Storage Condition and Buffer:	Rabbit IgG in phosphate buffered saline , pH 7.4, 150mM NaCl, 0.02% sodium azide and 50% glycerol.Store at -20 °C.Stable for 12 months from date of receipt.



Western blot analysis of extracts of A431 cells treated with EGF, using Phospho-Afadin (Ser1799) Ab.



IMPORTANT: For western blot, incubate membrane with diluted primary Ab in 5% w/v milk , 1X TBS, 0.1% Tween@20 at 4°C with gentle shaking, overnight.

For Research Use Only. Not for use in diagnostic and therapeutic procedures. Not for resale without express authorization.