

## Phospho-Atg13 (Ser355) Ab

Cat.#: AF2319  
 Size: 100ul,200ul

Concn.: 1mg/ml  
 Source: Rabbit

Mol.Wt.: 72kDa  
 Clonality: Polyclonal

**Application:** WB 1:500-1:2000, IHC 1:50-1:200

**Reactivity:** Human,Mouse,Rat

**Purification:** The Ab is from purified rabbit serum by affinity purification via sequential chromatography on phospho- and non-phospho-peptide affinity columns.

**Specificity:** Phospho-Atg13 (Ser355) Ab detects endogenous levels of Atg13.

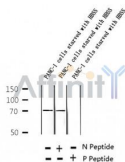
**Immunogen:** A synthesized peptide derived from human Atg13 around the phosphorylation site of Ser355.

**Uniprot:** O75143

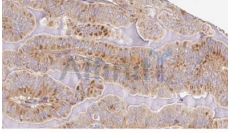
**Subcellular Location:** Cytoplasm > cytosol. Preautophagosomal structure. Under starvation conditions, is localized to punctate structures primarily representing the isolation membrane and the isolation membrane sequesters a portion of the cytoplasm resulting in autophagosome formation.

**Similarity:** The LIR motif (LC3-interacting region) is required for the interaction with the ATG8 family proteins GABARAP, GABARAPL, GABARAPL2, and MAP1LC3A. Belongs to the ATG13 family. Metazoan subfamily.

**Storage Condition and Buffer:** Rabbit IgG in phosphate buffered saline , pH 7.4, 150mM NaCl, 0.02% sodium azide and 50% glycerol. Store at -20 °C. Stable for 12 months from date of receipt.



Western blot analysis of extracts of PANC-1 cells starved with HBSS , using Phospho-Atg13 (Ser355) Ab.



AF2319 at 1/100 staining Human thyroid cancer tissue by IHC-P. The sample was formaldehyde fixed and a heat mediated antigen retrieval step in citrate buffer was performed. The sample was then blocked and incubated with the Ab for 1.5 hours at 22°C. An HRP conjugated goat anti-rabbit Ab was used as the secondary.

**IMPORTANT:** For western blot, incubate membrane with diluted primary Ab in 5% w/v milk , 1X TBS, 0.1% Tween@20 at 4°C with gentle shaking, overnight.

For Research Use Only. Not for use in diagnostic and therapeutic procedures. Not for resale without express authorization.