

Phospho-BMAL1 (Ser42) Ab

Cat.#: AF2326
Size: 100ul,200ul

Concn.: 1mg/ml
Source: Rabbit

Mol.Wt.: 78kDa
Clonality: Polyclonal

Application: WB 1:500-1:2000, IHC 1:50-1:200

Reactivity: Human, Mouse, Rat

Purification: The Ab is from purified rabbit serum by affinity purification via sequential chromatography on phospho- and non-phospho-peptide affinity columns.

Specificity: Phospho-BMAL1 (Ser42) Ab detects endogenous levels of BMAL1.

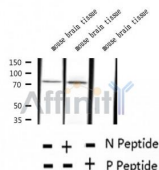
Immunogen: A synthesized peptide derived from human BMAL1 around the phosphorylation site of Ser42.

Uniprot: O00327

Subcellular Location: Nucleus. Cytoplasm. Nucleus, PML body. Shuttles between the nucleus and the cytoplasm and this nucleocytoplasmic shuttling is essential for the nuclear accumulation of CLOCK, target gene transcription and the degradation of the CLOCK-ARNTL/BMAL1 heterodimer. The sumoylated form localizes in the PML body. Sequestered to the cytoplasm in the presence of ID2.

Tissue Specificity: Hair follicles (at protein level). Highly expressed in the adult brain, skeletal muscle and heart.

Storage Condition and Buffer: Rabbit IgG in phosphate buffered saline , pH 7.4, 150mM NaCl, 0.02% sodium azide and 50% glycerol. Store at -20 °C. Stable for 12 months from date of receipt.



Western blot analysis of extracts of mouse brain tissue, using Phospho-BMAL1 (Ser42) Ab.



AF2326 at 1/100 staining Rat heart tissue by IHC-P. The sample was formaldehyde fixed and a heat mediated antigen retrieval step in citrate buffer was performed. The sample was then blocked and incubated with the Ab for 1.5 hours at 22°C. An HRP conjugated goat anti-rabbit Ab was used as the secondary.

IMPORTANT: For western blot, incubate membrane with diluted primary Ab in 5% w/v milk, 1X TBS, 0.1% Tween@20 at 4°C with gentle shaking, overnight.

For Research Use Only. Not for use in diagnostic and therapeutic procedures. Not for resale without express authorization.