

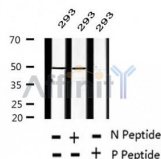
Phospho-Cyclin E1 (Thr77) Ab

Cat.#: AF2334
Size: 100ul, 200ul

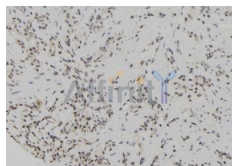
Concn.: 1mg/ml
Source: Rabbit

Mol.Wt.: 48kDa
Clonality: Polyclonal

Application:	WB 1:500-1:2000, IHC 1:50-1:200
Reactivity:	Human, Mouse
Purification:	The Ab is from purified rabbit serum by affinity purification via sequential chromatography on phospho- and non-phospho-peptide affinity columns.
Specificity:	Phospho-Cyclin E1 (Thr77) Ab detects endogenous levels of Cyclin E1.
Immunogen:	A synthesized peptide derived from human Cyclin E1 around the phosphorylation site of Thr77.
Uniprot:	P24864
Subcellular Location:	Nucleus.
Tissue Specificity:	Highly expressed in testis and placenta. Low levels in bronchial epithelial cells.
Similarity:	Belongs to the cyclin family. Cyclin E subfamily.
Storage Condition and Buffer:	Rabbit IgG in phosphate buffered saline , pH 7.4, 150mM NaCl, 0.02% sodium azide and 50% glycerol. Store at -20 °C. Stable for 12 months from date of receipt.



Western blot analysis of extracts of 293 cells, using Phospho-Cyclin E1 (Thr77) Ab.



AF2334 at 1/100 staining Human gastric tissue by IHC-P. The sample was formaldehyde fixed and a heat mediated antigen retrieval step in citrate buffer was performed. The sample was then blocked and incubated with the Ab for 1.5 hours at 22°C. An HRP conjugated goat anti-rabbit Ab was used as the secondary.

IMPORTANT: For western blot, incubate membrane with diluted primary Ab in 5% w/v milk , 1X TBS, 0.1% Tween@20 at 4°C with gentle shaking, overnight.

For Research Use Only. Not for use in diagnostic and therapeutic procedures. Not for resale without express authorization.