

Phospho-eEF2k (Ser366) Ab

Cat.#: AF2340
Size: 100ul, 200ul

Concn.: 1mg/ml
Source: Rabbit

Mol.Wt.: 105kDa
Clonality: Polyclonal

Application: WB 1:500-1:2000, IHC 1:50-1:200

Reactivity: Human, Mouse

Purification: The Ab is from purified rabbit serum by affinity purification via sequential chromatography on phospho- and non-phospho-peptide affinity columns.

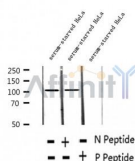
Specificity: Phospho-eEF2k (Ser366) Ab detects endogenous levels of eEF2k.

Immunogen: A synthesized peptide derived from human eEF2k around the phosphorylation site of Ser366.

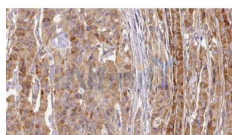
Uniprot: O00418

Similarity: Belongs to the protein kinase superfamily. Alpha-type protein kinase family.

Storage Condition and Buffer: Rabbit IgG in phosphate buffered saline, pH 7.4, 150mM NaCl, 0.02% sodium azide and 50% glycerol. Store at -20 °C. Stable for 12 months from date of receipt.



Western blot analysis of extracts of serum-starved HeLa cells, using Phospho-eEF2k (Ser366) Ab.



AF2340 at 1/100 staining Human thyroid cancer tissue by IHC-P. The sample was formaldehyde fixed and a heat mediated antigen retrieval step in citrate buffer was performed. The sample was then blocked and incubated with the Ab for 1.5 hours at 22°C. An HRP conjugated goat anti-rabbit Ab was used as the secondary.

IMPORTANT: For western blot, incubate membrane with diluted primary Ab in 5% w/v milk, 1X TBS, 0.1% Tween@20 at 4°C with gentle shaking, overnight.



Affinity Biosciences

website: www.affbiotech.com

order: order@affbiotech.com

For Research Use Only. Not for use in diagnostic and therapeutic procedures. Not for resale without express authorization.