

Phospho-MAPKAPK-2 (Thr222) Ab

Cat.#: AF2361	Concn.: 1mg/ml	Mol.Wt.: 49kDa
Size: 100ul,200ul	Source: Rabbit	Clonality: Polyclonal

Application: WB 1:500-1:2000, IHC 1:50-1:200

Reactivity: Human,Mouse,Rat

Purification: The Ab is from purified rabbit serum by affinity purification via sequential chromatography on phospho- and non-phospho-peptide affinity columns.

Specificity: Phospho-MAPKAPK-2 (Thr222) Ab detects endogenous levels of MAPKAPK-2.

Immunogen: A synthesized peptide derived from human MAPKAPK-2 around the phosphorylation site of Thr222.

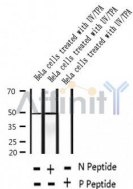
Uniprot: P49137

Subcellular Location: Cytoplasmic and Nuclear

Tissue Specificity: Expressed in all tissues examined.

Similarity: Belongs to the protein kinase superfamily. CAMK Ser/Thr protein kinase family.

Storage Condition and Buffer: Rabbit IgG in phosphate buffered saline , pH 7.4, 150mM NaCl, 0.02% sodium azide and 50% glycerol.Store at -20 °C.Stable for 12 months from date of receipt.



Western blot analysis of extracts of HeLa cells treated with UV/TPA, using Phospho-MAPKAPK-2 (Thr222) Ab .



AF2361 at 1/100 staining Mouse liver tissue by IHC-P. The sample was formaldehyde fixed and a heat mediated antigen retrieval step in citrate buffer was performed. The sample was then blocked and incubated with the Ab for 1.5 hours at 22°C. An HRP conjugated goat anti-rabbit Ab was used as the secondary.

IMPORTANT: For western blot, incubate membrane with diluted primary Ab in 5% w/v milk , 1X TBS, 0.1% Tween@20 at 4°C with gentle shaking, overnight.

For Research Use Only. Not for use in diagnostic and therapeutic procedures. Not for resale without express authorization.