

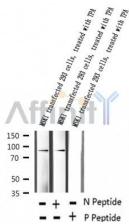
Phospho-MSK1 (Ser360) Ab

Cat.#: AF2366
 Size: 100ul,200ul

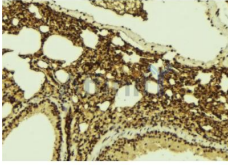
Concn.: 1mg/ml
 Source: Rabbit

Mol.Wt.: 90kDa
 Clonality: Polyclonal

Application:	WB 1:500-1:2000, IHC 1:50-1:200
Reactivity:	Human,Mouse,Rat
Purification:	The Ab is from purified rabbit serum by affinity purification via sequential chromatography on phospho- and non-phospho-peptide affinity columns.
Specificity:	Phospho-MSK1 (Ser360) Ab detects endogenous levels of MSK1.
Immunogen:	A synthesized peptide derived from human MSK1 around the phosphorylation site of Ser360.
Uniprot:	O75582
Subcellular Location:	Nucleus. Cytoplasm. Predominantly nuclear. Partially cytoplasmic.
Tissue Specificity:	Widely expressed with high levels in heart, brain and placenta. Less abundant in lung, kidney and liver.
Similarity:	Belongs to the protein kinase superfamily. AGC Ser/Thr protein kinase family. S6 kinase subfamily.
Storage Condition and Buffer:	Rabbit IgG in phosphate buffered saline , pH 7.4, 150mM NaCl, 0.02% sodium azide and 50% glycerol.Store at -20 °C.Stable for 12 months from date of receipt.



Western blot analysis of extracts of MSK1 transfected 293 cells, treated with TPA, using Phospho-MSK1 (Ser360) Ab.



AF2366 at 1/100 staining Mouse lung tissue by IHC-P. The sample was formaldehyde fixed and a heat mediated antigen retrieval step in citrate buffer was performed. The sample was then blocked and incubated with the Ab for 1.5 hours at 22°C. An HRP conjugated goat anti-rabbit Ab was used as the secondary.

IMPORTANT: For western blot, incubate membrane with diluted primary Ab in 5% w/v milk , 1X TBS, 0.1% Tween@20 at 4°C with gentle shaking, overnight.

For Research Use Only. Not for use in diagnostic and therapeutic procedures. Not for resale without express authorization.