

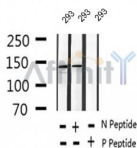
## Phospho-MYPT1 (Thr696) Ab

Cat.#: AF2368  
Size: 100ul,200ul

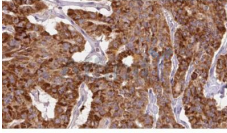
Concn.: 1mg/ml  
Source: Rabbit

Mol.Wt.: 140kDa  
Clonality: Polyclonal

|                               |   |
|-------------------------------|---|
| Application:                  | WB 1:500-1:2000, IHC 1:50-1:200   |
| Reactivity:                   | Human, Mouse, Rat   |
| Purification:                 | The Ab is from purified rabbit serum by affinity purification via sequential chromatography on phospho- and non-phospho-peptide affinity columns.   |
| Specificity:                  | Phospho-MYPT1 (Thr696) Ab detects endogenous levels of MYPT1.   |
| Immunogen:                    | A synthesized peptide derived from human MYPT1 around the phosphorylation site of Thr696.   |
| Uniprot:                      | O14974  |
| Subcellular Location:         | Cytoplasm. Along actomyosin filaments and stress fibers.  |
| Tissue Specificity:           | Expressed in striated muscles, specifically in type 2a fibers (at protein level).   |
| Similarity:                   | Heterotetramerization is mediated by the interaction between a coiled-coil of PRKG1 and the leucine/isoleucine zipper of PPP1R12A/MBS, the myosin-binding subunit of the myosin phosphatase. The KVKF motif mediates interaction with PPP1CB. |
| Storage Condition and Buffer: | Rabbit IgG in phosphate buffered saline, pH 7.4, 150mM NaCl, 0.02% sodium azide and 50% glycerol. Store at -20 °C. Stable for 12 months from date of receipt.   |



Western blot analysis of extracts of 293 cells, using Phospho-MYPT1 (Thr696) Ab.



AF2368 at 1/100 staining Human thyroid cancer tissue by IHC-P. The sample was formaldehyde fixed and a heat mediated antigen retrieval step in citrate buffer was performed. The sample was then blocked and incubated with the Ab for 1.5 hours at 22°C. An HRP conjugated goat anti-rabbit Ab was used as the secondary.

**IMPORTANT:** For western blot, incubate membrane with diluted primary Ab in 5% w/v milk , 1X TBS, 0.1% Tween@20 at 4°C with gentle shaking, overnight.

For Research Use Only. Not for use in diagnostic and therapeutic procedures. Not for resale without express authorization.