

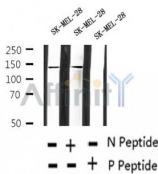
Phospho-NEDD4L (Ser448) Ab

Cat.#: AF2370
Size: 100ul,200ul

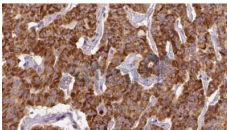
Concn.: 1mg/ml
Source: Rabbit

Mol.Wt.: 110, 135kDa
Clonality: Polyclonal

Application:	WB 1:500-1:2000, IHC 1:50-1:200
Reactivity:	Human,Mouse,Rat
Purification:	The Ab is from purified rabbit serum by affinity purification via sequential chromatography on phospho- and non-phospho-peptide affinity columns.
Specificity:	Phospho-NEDD4L (Ser448) Ab detects endogenous levels of NEDD4L.
Immunogen:	A synthesized peptide derived from human NEDD4L around the phosphorylation site of Ser448.
Uniprot:	Q96PU5
Subcellular Location:	Cytoplasm. May be recruited to exosomes by NDFIP1.
Tissue Specificity:	Ubiquitously expressed, with highest levels in prostate, pancreas and kidney (PubMed:14615060, PubMed:15496141, PubMed:19664597). Expressed in melanocytes (PubMed:23999003).
Storage Condition and Buffer:	Rabbit IgG in phosphate buffered saline , pH 7.4, 150mM NaCl, 0.02% sodium azide and 50% glycerol.Store at -20 °C.Stable for 12 months from date of receipt.



Western blot analysis of extracts of SK-MEL-28 cells, using Phospho-NEDD4L (Ser448) Ab.



AF2370 at 1/100 staining Human thyroid cancer tissue by IHC-P. The sample was formaldehyde fixed and a heat mediated antigen retrieval step in citrate buffer was performed. The sample was then blocked and incubated with the Ab for 1.5 hours at 22°C. An HRP conjugated goat anti-rabbit Ab was used as the secondary.

IMPORTANT: For western blot, incubate membrane with diluted primary Ab in 5% w/v milk , 1X TBS, 0.1% Tween@20 at 4°C with gentle shaking, overnight.

For Research Use Only. Not for use in diagnostic and therapeutic procedures. Not for resale without express authorization.