

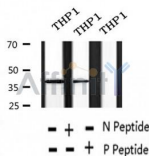
## Phospho-p40phox (Thr154) Ab

Cat.#: AF2376  
 Size: 100ul,200ul

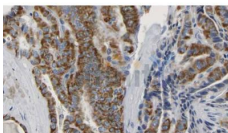
Concn.: 1mg/ml  
 Source: Rabbit

Mol.Wt.: 40kDa  
 Clonality: Polyclonal

|                               |  |
|-------------------------------|--|
| Application:                  | WB 1:500-1:2000, IHC 1:50-1:200  |
| Reactivity:                   | Human,Mouse  |
| Purification:                 | The Ab is from purified rabbit serum by affinity purification via sequential chromatography on phospho- and non-phospho-peptide affinity columns.            |
| Specificity:                  | Phospho-p40phox (Thr154) Ab detects endogenous levels of p40phox.  |
| Immunogen:                    | A synthesized peptide derived from human p40phox around the phosphorylation site of Thr154.  |
| Uniprot:                      | Q15080   |
| Subcellular Location:         | Cytoplasm.   |
| Tissue Specificity:           | Expression is restricted to hematopoietic cells.   |
| Similarity:                   | The PB1 domain mediates the association with NCF2/p67-PHOX.The PX domain mediates interaction with membranes enriched in phosphatidylinositol 3-phosphate.   |
| Storage Condition and Buffer: | Rabbit IgG in phosphate buffered saline , pH 7.4, 150mM NaCl, 0.02% sodium azide and 50% glycerol.Store at -20 °C.Stable for 12 months from date of receipt. |



Western blot analysis of extracts of THP1 cells, using Phospho-p40phox (Thr154) Ab.



AF2376 at 1/100 staining Human thyroid cancer tissue by IHC-P. The sample was formaldehyde fixed and a heat mediated antigen retrieval step in citrate buffer was performed. The sample was then blocked and incubated with the Ab for 1.5 hours at 22°C. An HRP conjugated goat anti-rabbit Ab was used as the secondary.

**IMPORTANT:** For western blot, incubate membrane with diluted primary Ab in 5% w/v milk , 1X TBS, 0.1% Tween@20 at 4°C with gentle shaking, overnight.

For Research Use Only. Not for use in diagnostic and therapeutic procedures. Not for resale without express authorization.