

## Phospho-PAK1 (Ser199/204)/PAK2 (Ser192/197) Ab

Cat.#: AF2380                      Concn.: 1mg/ml                      Mol.Wt.: 61 to 67 (PAK2), 68 to 74 (PAK1/3)kDa  
 Size: 100ul,200ul                      Source: Rabbit                      Clonality: Polyclonal

**Application:** WB 1:500-1:2000, IHC 1:50-1:200

**Reactivity:** Human,Mouse,Rat

**Purification:** The Ab is from purified rabbit serum by affinity purification via sequential chromatography on phospho- and non-phospho-peptide affinity columns.

**Specificity:** Phospho-PAK1 (Ser199/204)/PAK2 (Ser192/197) Ab detects endogenous levels of PAK1.

**Immunogen:** A synthesized peptide derived from human PAK1 around the phosphorylation site of Ser199/204.

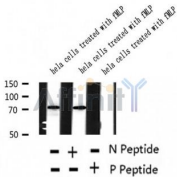
**Uniprot:** Q13153/Q13177

**Subcellular Location:** Cytoplasm. Cell junction > focal adhesion. Recruited to focal adhesions upon activation.

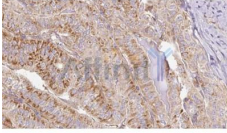
**Tissue Specificity:** Overexpressed in gastric cancer cells and tissues (at protein level) (PubMed:25766321).

**Similarity:** Belongs to the protein kinase superfamily. STE Ser/Thr protein kinase family. STE20 subfamily.

**Storage Condition and Buffer:** Rabbit IgG in phosphate buffered saline , pH 7.4, 150mM NaCl, 0.02% sodium azide and 50% glycerol.Store at -20 °C.Stable for 12 months from date of receipt.



Western blot analysis of extracts of hela cells treated with fMLP, using Phospho-PAK1 (Ser199/204)/PAK2 (Ser192/197) Ab.



AF2380 at 1/100 staining Human thyroid cancer tissue by IHC-P. The sample was formaldehyde fixed and a heat mediated antigen retrieval step in citrate buffer was performed. The sample was then blocked and incubated with the Ab for 1.5 hours at 22°C. An HRP conjugated goat anti-rabbit Ab was used as the secondary.

**IMPORTANT:** For western blot, incubate membrane with diluted primary Ab in 5% w/v milk , 1X TBS, 0.1% Tween@20 at 4°C with gentle shaking, overnight.

For Research Use Only. Not for use in diagnostic and therapeutic procedures. Not for resale without express authorization.