

Phospho-PBK/TOPK (Thr9) Ab

| | | |
|-------------------|----------------|-----------------------|
| Cat.#: AF2382 | Concn.: 1mg/ml | Mol.Wt.: 40kDa |
| Size: 100ul,200ul | Source: Rabbit | Clonality: Polyclonal |

Application: WB 1:500-1:2000, IHC 1:50-1:200

Reactivity: Human

Purification: The Ab is from purified rabbit serum by affinity purification via sequential chromatography on phospho- and non-phospho-peptide affinity columns.

Specificity: Phospho-PBK/TOPK (Thr9) Ab detects endogenous levels of PBK/TOPK.

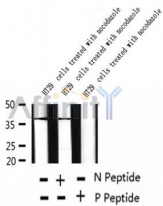
Immunogen: A synthesized peptide derived from human PBK/TOPK around the phosphorylation site of Thr9.

Uniprot: Q96KB5

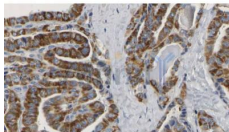
Tissue Specificity: Expressed in the testis and placenta. In the testis, restrictedly expressed in outer cell layer of seminiferous tubules.

Similarity: Belongs to the protein kinase superfamily. STE Ser/Thr protein kinase family. MAP kinase kinase subfamily.

Storage Condition and Buffer: Rabbit IgG in phosphate buffered saline , pH 7.4, 150mM NaCl, 0.02% sodium azide and 50% glycerol.Store at -20 °C.Stable for 12 months from date of receipt.



Western blot analysis of extracts of HT29 cells treated with nocodazole , using Phospho-PBK/TOPK (Thr9) Ab.



AF2382 at 1/100 staining Human thyroid cancer tissue by IHC-P. The sample was formaldehyde fixed and a heat mediated antigen retrieval step in citrate buffer was performed. The sample was then blocked and incubated with the Ab for 1.5 hours at 22°C. An HRP conjugated goat anti-rabbit Ab was used as the secondary.

IMPORTANT: For western blot, incubate membrane with diluted primary Ab in 5% w/v milk , 1X TBS, 0.1% Tween@20 at 4°C with gentle shaking, overnight.

For Research Use Only. Not for use in diagnostic and therapeutic procedures. Not for resale without express authorization.