

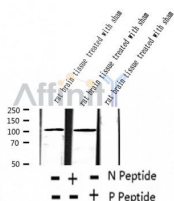
Phospho-PSD93 (Tyr340) Ab

Cat.#: AF2389
Size: 100ul, 200ul

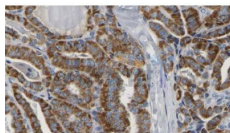
Concn.: 1mg/ml
Source: Rabbit

Mol.Wt.: 110kDa
Clonality: Polyclonal

Application:	WB 1:500-1:2000, IHC 1:50-1:200
Reactivity:	Human, Mouse, Rat
Purification:	The Ab is from purified rabbit serum by affinity purification via sequential chromatography on phospho- and non-phospho-peptide affinity columns.
Specificity:	Phospho-PSD93 (Tyr340) Ab detects endogenous levels of PSD93.
Immunogen:	A synthesized peptide derived from human PSD93 around the phosphorylation site of Tyr340.
Uniprot:	Q15700
Subcellular Location:	Plasma membrane;
Similarity:	An N-terminally truncated L27 domain is predicted in isoform 2 at positions 1 through 27. Belongs to the MAGUK family.
Storage Condition and Buffer:	Rabbit IgG in phosphate buffered saline, pH 7.4, 150mM NaCl, 0.02% sodium azide and 50% glycerol. Store at -20 °C. Stable for 12 months from date of receipt.



Western blot analysis of extracts of rat brain tissue treated with sham, using Phospho-PSD93 (Tyr340) Ab.



AF2389 at 1/100 staining Human thyroid cancer tissue by IHC-P. The sample was formaldehyde fixed and a heat mediated antigen retrieval step in citrate buffer was performed. The sample was then blocked and incubated with the Ab for 1.5 hours at 22°C. An HRP conjugated goat anti-rabbit Ab was used as the secondary.

IMPORTANT: For western blot, incubate membrane with diluted primary Ab

in 5% w/v milk , 1X TBS, 0.1% Tween@20 at 4°C with gentle shaking,
overnight.

For Research Use Only. Not for use in diagnostic and therapeutic
procedures. Not for resale without express authorization.