

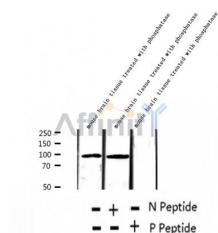
Phospho-PSD95 (Ser295) Ab

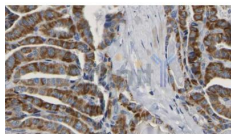
Cat.#: AF2390
Size: 100ul,200ul

Concn.: 1mg/ml
Source: Rabbit

Mol.Wt.: 95kDa
Clonality: Polyclonal

Application:	WB 1:500-1:2000, IHC 1:50-1:200
Reactivity:	Human,Mouse,Rat
Purification:	The Ab is from purified rabbit serum by affinity purification via sequential chromatography on phospho- and non-phospho-peptide affinity columns.
Specificity:	Phospho-PSD95 (Ser295) Ab detects endogenous levels of PSD95.
Immunogen:	A synthesized peptide derived from human PSD95 around the phosphorylation site of Ser295.
Uniprot:	P78352
Subcellular Location:	Cell membrane. Cell junction, synapse, postsynaptic cell membrane, postsynaptic density. Cell projection, axon. Cell junction, synapse. High levels in postsynaptic density of neurons in the forebrain. Also in presynaptic region of inhibitory synapses formed by cerebellar basket cells on axon hillocks of Purkinje cells.
Tissue Specificity:	Brain.
Similarity:	The PDZ domain 3 mediates interaction with ADR1B. The L27 domain near the N-terminus of isoform 2 is required for HGS/HRS-dependent targeting to postsynaptic density. Belongs to the MAGUK family.
Storage Condition and Buffer:	Rabbit IgG in phosphate buffered saline , pH 7.4, 150mM NaCl, 0.02% sodium azide and 50% glycerol. Store at -20 °C. Stable for 12 months from date of receipt.





AF2390 at 1/100 staining Human thyroid cancer tissue by IHC-P. The sample was formaldehyde fixed and a heat mediated antigen retrieval step in citrate buffer was performed. The sample was then blocked and incubated with the Ab for 1.5 hours at 22°C. An HRP conjugated goat anti-rabbit Ab was used as the secondary.

IMPORTANT: For western blot, incubate membrane with diluted primary Ab in 5% w/v milk , 1X TBS, 0.1% Tween@20 at 4°C with gentle shaking, overnight.

For Research Use Only. Not for use in diagnostic and therapeutic procedures. Not for resale without express authorization.