

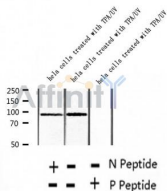
## Phospho-RSK2 (Ser227) Ab

Cat.#: AF2399  
 Size: 100ul,200ul

Concn.: 1mg/ml  
 Source: Rabbit

Mol.Wt.: 90kDa  
 Clonality: Polyclonal

- Application:** WB 1:500-1:2000, IHC 1:50-1:200
- Reactivity:** Human,Mouse,Rat
- Purification:** The Ab is from purified rabbit serum by affinity purification via sequential chromatography on phospho- and non-phospho-peptide affinity columns.
- Specificity:** Phospho-RSK2 (Ser227) Ab detects endogenous levels of RSK2.
- Immunogen:** A synthesized peptide derived from human RSK2 around the phosphorylation site of Ser227.
- Uniprot:** P51812
- Subcellular Location:** Nucleus;
- Tissue Specificity:** Expressed in many tissues, highest levels in skeletal muscle.
- Similarity:** Belongs to the protein kinase superfamily. AGC Ser/Thr protein kinase family. S6 kinase subfamily.
- Storage Condition and Buffer:** Rabbit IgG in phosphate buffered saline , pH 7.4, 150mM NaCl, 0.02% sodium azide and 50% glycerol.Store at -20 °C.Stable for 12 months from date of receipt.



Western blot analysis of extracts of hela cells treated with TPA/UV, using Phospho-RSK2 (Ser227) Ab .



AF2399 at 1/100 staining Mouse heart tissue by IHC-P. The sample was formaldehyde fixed and a heat mediated antigen retrieval step in citrate buffer was performed. The sample was then blocked and incubated with the Ab for 1.5 hours at 22°C. An HRP conjugated goat anti-rabbit Ab was used as the secondary.

**IMPORTANT:** For western blot, incubate membrane with diluted primary Ab in 5% w/v milk , 1X TBS, 0.1% Tween@20 at 4°C with gentle shaking, overnight.

For Research Use Only. Not for use in diagnostic and therapeutic procedures. Not for resale without express authorization.