

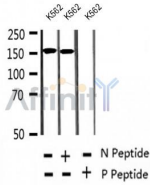
Phospho-SHIP2 (Tyr986/987) Ab

Cat.#: AF2405
Size: 100ul,200ul

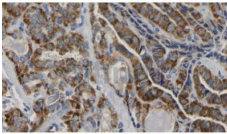
Concn.: 1mg/ml
Source: Rabbit

Mol.Wt.: 160kDa
Clonality: Polyclonal

Application:	WB 1:500-1:2000, IHC 1:50-1:200
Reactivity:	Human,Mouse,Rat
Purification:	The Ab is from purified rabbit serum by affinity purification via sequential chromatography on phospho- and non-phospho-peptide affinity columns.
Specificity:	Phospho-SHIP2 (Tyr986/987) Ab detects endogenous levels of SHIP2.
Immunogen:	A synthesized peptide derived from human SHIP2 around the phosphorylation site of Tyr986/987.
Uniprot:	O15357
Subcellular Location:	Cytoplasm > cytosol. Cytoplasm > cytoskeleton > actin patch. Membrane. Translocates to membrane ruffles when activated, translocation is probably due to different mechanisms depending on the stimulus and cell type. Partly translocated via its SH2 domain which mediates interaction with tyrosine phosphorylated receptors such as the FC-gamma-RIIB receptor (FCGR2B). Tyrosine phosphorylation may also participate in membrane localization. Insulin specifically stimulates its redistribution from the cytosol to the plasma membrane. Recruited to the membrane following M-CSF stimulation.
Tissue Specificity:	Widely expressed, most prominently in skeletal muscle, heart and brain. Present in platelets. Expressed in transformed myeloid cells and in primary macrophages, but not in peripheral blood monocytes.
Similarity:	The SH2 domain interacts with tyrosine phosphorylated forms of proteins such as SHC1 or FCGR2A. It also mediates the interaction with p130Cas/BCAR1. The NPXY sequence motif found in many tyrosine-phosphorylated proteins is required for the specific binding of the PID domain. Belongs to the inositol 1,4,5-trisphosphate 5-phosphatase family.
Storage Condition and Buffer:	Rabbit IgG in phosphate buffered saline , pH 7.4, 150mM NaCl, 0.02% sodium azide and 50% glycerol. Store at -20 °C. Stable for 12 months from date of receipt.



Western blot analysis of extracts of K562 cells, using Phospho-SHIP2 (Tyr986/987) Ab.



AF2405 at 1/100 staining Human thyroid cancer tissue by IHC-P. The sample was formaldehyde fixed and a heat mediated antigen retrieval step in citrate buffer was performed. The sample was then blocked and incubated with the Ab for 1.5 hours at 22°C. An HRP conjugated goat anti-rabbit Ab was used as the secondary.

IMPORTANT: For western blot, incubate membrane with diluted primary Ab in 5% w/v milk , 1X TBS, 0.1% Tween@20 at 4°C with gentle shaking, overnight.

For Research Use Only. Not for use in diagnostic and therapeutic procedures. Not for resale without express authorization.