

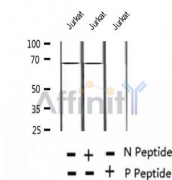
## Phospho-SHP-1 (Tyr564) Ab

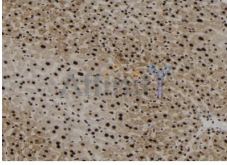
Cat.#: AF2406  
Size: 100ul,200ul

Concn.: 1mg/ml  
Source: Rabbit

Mol.Wt.: 68kDa  
Clonality: Polyclonal

Application:	WB 1:500-1:2000, IHC 1:50-1:200
Reactivity:	Human,Mouse
Purification:	The Ab is from purified rabbit serum by affinity purification via sequential chromatography on phospho- and non-phospho-peptide affinity columns.
Specificity:	Phospho-SHP-1 (Tyr564) Ab detects endogenous levels of SHP-1.
Immunogen:	A synthesized peptide derived from human SHP-1 around the phosphorylation site of Tyr564.
Uniprot:	P29350
Subcellular Location:	Cytoplasm. Nucleus. In neurons, translocates into the nucleus after treatment with angiotensin II.
Tissue Specificity:	Isoform 1 is expressed in hematopoietic cells. Isoform 2 is expressed in non-hematopoietic cells.
Similarity:	The N-terminal SH2 domain functions as an auto-inhibitory domain, blocking the catalytic domain in the ligand-free close conformation. Belongs to the protein-tyrosine phosphatase family. Non-receptor class 2 subfamily.
Storage Condition and Buffer:	Rabbit IgG in phosphate buffered saline , pH 7.4, 150mM NaCl, 0.02% sodium azide and 50% glycerol. Store at -20 °C. Stable for 12 months from date of receipt.





AF2406 at 1/100 staining Mouse liver tissue by IHC-P. The sample was formaldehyde fixed and a heat mediated antigen retrieval step in citrate buffer was performed. The sample was then blocked and incubated with the Ab for 1.5 hours at 22°C. An HRP conjugated goat anti-rabbit Ab was used as the secondary.

**IMPORTANT:** For western blot, incubate membrane with diluted primary Ab in 5% w/v milk , 1X TBS, 0.1% Tween@20 at 4°C with gentle shaking, overnight.

For Research Use Only. Not for use in diagnostic and therapeutic procedures. Not for resale without express authorization.