

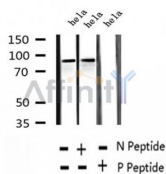
Phospho-TLK1 (Ser743) Ab

Cat.#: AF2425
Size: 100ul,200ul

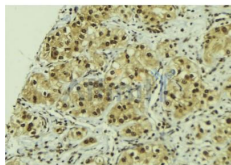
Concn.: 1mg/ml
Source: Rabbit

Mol.Wt.: 86kDa
Clonality: Polyclonal

| | |
|-------------------------------|--|
| Application: | WB 1:500-1:2000, IHC 1:50-1:200 |
| Reactivity: | Human, Mouse |
| Purification: | The Ab is from purified rabbit serum by affinity purification via sequential chromatography on phospho- and non-phospho-peptide affinity columns. |
| Specificity: | Phospho-TLK1 (Ser743) Ab detects endogenous levels of TLK1. |
| Immunogen: | A synthesized peptide derived from human TLK1 around the phosphorylation site of Ser743. |
| Uniprot: | Q9UKI8 |
| Subcellular Location: | Nucleus. |
| Tissue Specificity: | Widely expressed. Present in fetal placenta, liver, kidney and pancreas but not heart or skeletal muscle. Also found in adult cell lines. Isoform 3 is ubiquitously expressed in all tissues examined. |
| Similarity: | Belongs to the protein kinase superfamily. Ser/Thr protein kinase family. |
| Storage Condition and Buffer: | Rabbit IgG in phosphate buffered saline , pH 7.4, 150mM NaCl, 0.02% sodium azide and 50% glycerol. Store at -20 °C. Stable for 12 months from date of receipt. |



Western blot analysis of extracts of hela cells, using Phospho-TLK1 (Ser743) Ab.



AF2425 at 1/100 staining Human breast cancer tissue by IHC-P. The sample was formaldehyde fixed and a heat mediated antigen retrieval step in citrate buffer was performed. The sample was then blocked and incubated with the Ab for 1.5 hours at 22°C. An HRP conjugated goat anti-rabbit Ab was used as the secondary.

IMPORTANT: For western blot, incubate membrane with diluted primary Ab in 5% w/v milk, 1X TBS, 0.1% Tween@20 at 4°C with gentle shaking, overnight.

For Research Use Only. Not for use in diagnostic and therapeutic procedures. Not for resale without express authorization.