

## Phospho-TRAF2 (Ser11) Ab

Cat.#: AF2428  
Size: 100ul,200ul

Concn.: 1mg/ml  
Source: Rabbit

Mol.Wt.: 53kDa  
Clonality: Polyclonal

Application: WB 1:500-1:2000, IHC 1:50-1:200

Reactivity: Human, Mouse, Rat

Purification: The Ab is from purified rabbit serum by affinity purification via sequential chromatography on phospho- and non-phospho-peptide affinity columns.

Specificity: Phospho-TRAF2 (Ser11) Ab detects endogenous levels of TRAF2.

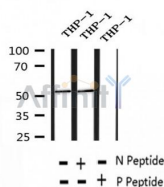
Immunogen: A synthesized peptide derived from human TRAF2 around the phosphorylation site of Ser11.

Uniprot: Q12933

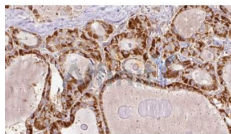
Subcellular Location: Cytoplasm.

Similarity: The coiled coil domain mediates homo- and hetero-oligomerization. The MATH/TRAF domain binds to receptor cytoplasmic domains. The RING-type zinc finger domain is essential for E3 ubiquitin-protein ligase activity. It is not essential for the stabilization of BIRC2, or for the ubiquitination of RIPK1 in response to TNFR1 signaling. Belongs to the TNF receptor-associated factor family. A subfamily.

Storage Condition and Buffer: Rabbit IgG in phosphate buffered saline, pH 7.4, 150mM NaCl, 0.02% sodium azide and 50% glycerol. Store at -20 °C. Stable for 12 months from date of receipt.



Western blot analysis of extracts of THP-1 cells, using Phospho-TRAF2 (Ser11) Ab.



AF2428 at 1/100 staining Human thyroid cancer tissue by IHC-P. The sample was formaldehyde fixed and a heat mediated antigen retrieval step in citrate buffer was performed. The sample was then blocked and incubated with the Ab for 1.5 hours at 22°C. An HRP conjugated goat anti-rabbit Ab was used as the secondary.

**IMPORTANT:** For western blot, incubate membrane with diluted primary Ab in 5% w/v milk , 1X TBS, 0.1% Tween@20 at 4°C with gentle shaking, overnight.

For Research Use Only. Not for use in diagnostic and therapeutic procedures. Not for resale without express authorization.