

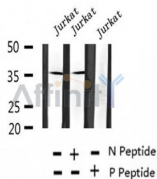
Phospho-CDK6(Tyr292) Ab

Cat.#: AF2441
 Size: 100ul,200ul

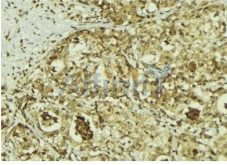
Concn.: 1mg/ml
 Source: Rabbit

Mol.Wt.: 36kDa
 Clonality: Polyclonal

Application:	WB 1:500-1:2000, IHC 1:50-1:200
Reactivity:	Human
Purification:	The Ab is from purified rabbit serum by affinity purification via sequential chromatography on phospho- and non-phospho-peptide affinity columns.
Specificity:	Phospho-CDK6(Tyr292) Ab detects endogenous levels of CDK6.
Immunogen:	A synthesized peptide derived from human CDK6 around the phosphorylation site of Tyr292.
Uniprot:	Q00534
Subcellular Location:	Nucleus;Cytoskeleton;
Tissue Specificity:	Expressed ubiquitously. Accumulates in squamous cell carcinomas, proliferating hematopoietic progenitor cells, beta-cells of pancreatic islets of Langerhans, and neuroblastomas. Reduced levels in differentiating cells.
Similarity:	Belongs to the protein kinase superfamily. CMGC Ser/Thr protein kinase family. CDC2/CDKX subfamily.
Storage Condition and Buffer:	Rabbit IgG in phosphate buffered saline , pH 7.4, 150mM NaCl, 0.02% sodium azide and 50% glycerol.Store at -20 °C.Stable for 12 months from date of receipt.



Western blot analysis of extracts of Jurkat cells, using Phospho-CDK6(Tyr292) Ab.



AF2441 at 1/100 staining Human breast cancer tissue by IHC-P. The sample was formaldehyde fixed and a heat mediated antigen retrieval step in citrate buffer was performed. The sample was then blocked and incubated with the Ab for 1.5 hours at 22°C. An HRP conjugated goat anti-rabbit Ab was used as the secondary.

IMPORTANT: For western blot, incubate membrane with diluted primary Ab in 5% w/v milk , 1X TBS, 0.1% Tween@20 at 4°C with gentle shaking, overnight.

For Research Use Only. Not for use in diagnostic and therapeutic procedures. Not for resale without express authorization.