

## KLF4 Ab

Cat.#: AF2737  
Size: 100ul,200ul

Concn.: 1mg/ml  
Source: Rabbit

Mol.Wt.: 50-60kDa  
Clonality: Polyclonal

Application: WB 1:500-1:2000, IHC 1:50-1:200

Reactivity: Human,Mouse,Rat

Purification: The antiserum was purified by peptide affinity chromatography using SulfoLink™ Coupling Resin (Thermo Fisher Scientific).

Specificity: KLF4 Ab detects endogenous levels of KLF4.

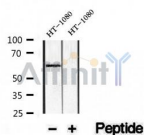
Immunogen: A synthesized peptide derived from human KLF4.

Uniprot: O43474

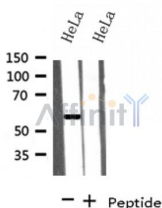
Subcellular Location: Nucleus.

Similarity: the 9aaTAD motif is a transactivation domain present in a large number of yeast and animal transcription factors.Belongs to the krueppel C2H2-type zinc-finger protein family.

Storage Condition and Buffer: Rabbit IgG in phosphate buffered saline , pH 7.4, 150mM NaCl, 0.02% sodium azide and 50% glycerol.Store at -20 °C.Stable for 12 months from date of receipt.



Western blot analysis of extracts of HT-1080 Jurkat cells, using KLF4 Ab.



Western blot analysis on HeLa cells lysate using KLF4 Ab



AF2737 at 1/100 staining Rat lung tissue by IHC-P. The sample was formaldehyde fixed and a heat mediated antigen retrieval step in citrate buffer was performed. The sample was then blocked and incubated with the Ab for 1.5 hours at 22°C. An HRP conjugated goat anti-rabbit Ab was used as the secondary.

**IMPORTANT:** For western blot, incubate membrane with diluted primary Ab in 5% w/v milk , 1X TBS, 0.1% Tween@20 at 4°C with gentle shaking, overnight.

For Research Use Only. Not for use in diagnostic and therapeutic procedures. Not for resale without express authorization.