

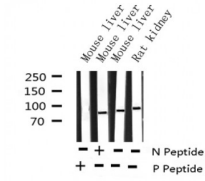
## Phospho-IKK alpha (Thr23) Ab

Cat.#: AF3012  
Size: 100ul,200ul

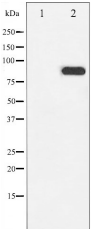
Concn.: 1mg/ml  
Source: Rabbit

Mol.Wt.: 85kDa  
Clonality: Polyclonal

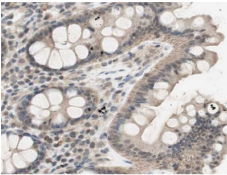
Application:	WB 1:500-1:2000 IHC 1:50-1:200
Reactivity:	Human,Mouse,Rat
Purification:	The Ab is from purified rabbit serum by affinity purification via sequential chromatography on phospho- and non-phospho-peptide affinity columns.
Specificity:	Phospho-IKK- alpha (Thr23) Ab detects endogenous levels of IKK- alpha only when phosphorylated at Threonine 23.
Immunogen:	A synthesized peptide derived from human IKK- alpha around the phosphorylation site of Threonine 23.
Uniprot:	O15111
Description:	IKK-alpha a kinase of the IKK family. Phosphorylates inhibitors of NF-kappa-B, leading to their dissociation from NF-kappa-B and ultimately to their degradation. Phosphorylated and activated downstream of growth factor receptors, IL1R, and TNFR by NAK, IRAK and NIK, respectively.
Subcellular Location:	Cytoplasm. Nucleus. Shuttles between the cytoplasm and the nucleus.
Tissue Specificity:	Widely expressed.
Similarity:	The kinase domain is located in the N-terminal region. The leucine zipper is important to allow homo- and hetero-dimerization. At the C-terminal region is located the region responsible for the interaction with NEMO/IKBKG. Belongs to the protein kinase superfamily. Ser/Thr protein kinase family. I-kappa-B kinase subfamily.
Storage Condition and Buffer:	Rabbit IgG in phosphate buffered saline , pH 7.4, 150mM NaCl, 0.02% sodium azide and 50% glycerol. Store at -20 °C. Stable for 12 months from date of receipt.



Western blot analysis of Phospho-IKK alpha (Thr23) expression in various lysates



Western blot analysis of IKK- alpha phosphorylation expression in EGF treated MDA-MB-435 whole cell lysates, The lane on the left is treated with the antigen-specific peptide.



AF3012 at 1/200 staining human colon cancer tissue sections by IHC-P. The tissue was formaldehyde fixed and a heat mediated antigen retrieval step in citrate buffer was performed. The tissue was then blocked and incubated with the Ab for 1.5 hours at 22°C. An HRP conjugated goat anti-rabbit Ab was used as the secondary.



AF3012 staining 293 by IF/ICC. The sample were fixed with PFA and permeabilized in 0.1% Triton X-100, then blocked in 10% serum for 45 minutes at 25°C. The primary Ab was diluted at 1/200 and incubated with the sample for 1 hour at 37°C. An Alexa Fluor 594 conjugated goat anti-rabbit IgG (H+L) Ab, diluted at 1/600, was used as the secondary Ab.

**IMPORTANT:** For western blot, incubate membrane with diluted primary Ab in 5% w/v milk, 1X TBS, 0.1% Tween@20 at 4°C with gentle shaking, overnight.

For Research Use Only. Not for use in diagnostic and therapeutic procedures. Not for resale without express authorization.