

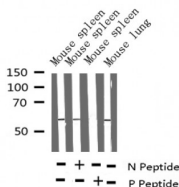
## Phospho-p56 Dok-2 (Tyr299) Ab

Cat.#: AF3021  
 Size: 100ul,200ul

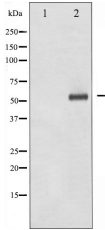
Concn.: 1mg/ml  
 Source: Rabbit

Mol.Wt.: 56kDa  
 Clonality: Polyclonal

Application:	WB 1:500-1:2000
Reactivity:	Human,Mouse
Purification:	The Ab is from purified rabbit serum by affinity purification via sequential chromatography on phospho- and non-phospho-peptide affinity columns.
Specificity:	Phospho-p56 Dok-2 (Tyr299) Ab detects endogenous levels of p56 Dok-2 only when phosphorylated at Tyrosine 299.
Immunogen:	A synthesized peptide derived from human p56 Dok-2 around the phosphorylation site of Tyrosine 299.
Uniprot:	O60496
Description:	The protein encoded by this gene is constitutively tyrosine phosphorylated in hematopoietic progenitors isolated from chronic myelogenous leukemia (CML) patients in the chronic phase. It may be a critical substrate for p210(bcr/abl), a chimeric protein whose presence is associated with CML.
Tissue Specificity:	Highly expressed in peripheral blood leukocytes, lymph nodes and spleen. Lower expression in thymus, bone marrow and fetal liver.
Similarity:	PTB domain mediates receptor interaction.Belongs to the DOK family. Type A subfamily.
Storage Condition and Buffer:	Rabbit IgG in phosphate buffered saline , pH 7.4, 150mM NaCl, 0.02% sodium azide and 50% glycerol.Store at -20 °C.Stable for 12 months from date of receipt.



Western blot analysis of Phospho-p56 Dok-2 (Tyr299) expression in various lysates



Western blot analysis of p56 Dok-2 phosphorylation expression in K562 whole cell lysates, The lane on the left is treated with the antigen-specific peptide.

**IMPORTANT:** For western blot, incubate membrane with diluted primary Ab in 5% w/v milk , 1X TBS, 0.1% Tween@20 at 4°C with gentle shaking, overnight.

For Research Use Only. Not for use in diagnostic and therapeutic procedures. Not for resale without express authorization.