

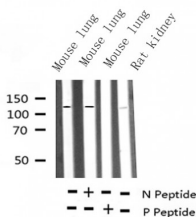
Phospho-JAK2 (Tyr1007) Ab

Cat.#: AF3022
 Size: 100ul,200ul

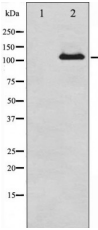
Concn.: 1mg/ml
 Source: Rabbit

Mol.Wt.: 120 kDa
 Clonality: Polyclonal

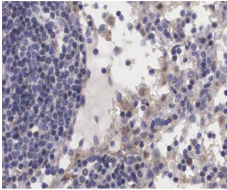
Application:	WB 1:1000 IHC 1:50-1:200, IF/ICC 1:100-1:500
Reactivity:	Human,Mouse,Rat
Purification:	The Ab is from purified rabbit serum by affinity purification via sequential chromatography on phospho- and non-phospho-peptide affinity columns.
Specificity:	Phospho-JAK2 (Tyr1007) Ab detects endogenous levels of JAK2 only when phosphorylated at Tyrosine 1007.
Immunogen:	A synthesized peptide derived from human JAK2 around the phosphorylation site of Tyrosine 1007.
Uniprot:	O60674
Description:	This gene product is a protein tyrosine kinase involved in a specific subset of cytokine receptor signaling pathways. It has been found to be constitutively associated with the prolactin receptor and is required for responses to gamma interferon.
Subcellular Location:	Endomembrane system. Nucleus.
Tissue Specificity:	Ubiquitously expressed throughout most tissues.
Similarity:	Possesses 2 protein kinase domains. The second one probably contains the catalytic domain, while the presence of slight differences suggest a different role for protein kinase 1 (By similarity).Belongs to the protein kinase superfamily. Tyr protein kinase family. JAK subfamily.
Storage Condition and Buffer:	Rabbit IgG in phosphate buffered saline , pH 7.4, 150mM NaCl, 0.02% sodium azide and 50% glycerol.Store at -20 °C.Stable for 12 months from date of receipt.



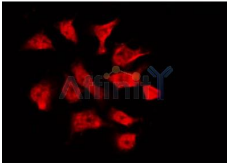
Western blot analysis of Phospho-JAK2 (Tyr1007) expression in various lysates



Western blot analysis of JAK2 phosphorylation expression in whole cell lysates, The lane on the left is treated with the antigen-specific peptide.



AF3022 at 1/200 staining human Lymph node tissue sections by IHC-P. The tissue was formaldehyde fixed and a heat mediated antigen retrieval step in citrate buffer was performed. The tissue was then blocked and incubated with the Ab for 1.5 hours at 22°C. An HRP conjugated goat anti-rabbit Ab was used as the secondary.



AF3022 staining K562 by IF/ICC. The sample were fixed with PFA and permeabilized in 0.1% Triton X-100, then blocked in 10% serum for 45 minutes at 25°C. The primary Ab was diluted at 1/200 and incubated with the sample for 1 hour at 37°C. An Alexa Fluor 594 conjugated goat anti-rabbit IgG (H+L) Ab, diluted at 1/600, was used as the secondary Ab.

IMPORTANT: For western blot, incubate membrane with diluted primary Ab in 5% w/v milk, 1X TBS, 0.1% Tween@20 at 4°C with gentle shaking, overnight.

For Research Use Only. Not for use in diagnostic and therapeutic procedures. Not for resale without express authorization.