

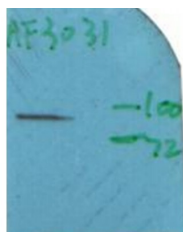
Phospho-MSK1 (Ser212) Ab

Cat.#: AF3031
Size: 100ul,200ul

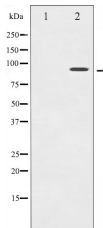
Concn.: 1mg/ml
Source: Rabbit

Mol.Wt.: 90kDa
Clonality: Polyclonal

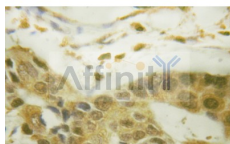
Application:	WB 1:500-1:2000 IHC 1:50-1:200
Reactivity:	Human,Mouse
Purification:	The Ab is from purified rabbit serum by affinity purification via sequential chromatography on phospho- and non-phospho-peptide affinity columns.
Specificity:	Phospho-MSK1 (Ser212) Ab detects endogenous levels of MSK1 only when phosphorylated at Serine 212.
Immunogen:	A synthesized peptide derived from human MSK1 around the phosphorylation site of Serine 212.
Uniprot:	O75582
Description:	an AGC kinase of the RSK family. Has two kinase domains connected by a regulatory linker region. Enzyme activity requires the presence of both kinase domains. Is phosphorylated and activated by Erk as well as p38 MAPK in response to growth factors and cellular stress.
Subcellular Location:	Nucleus. Cytoplasm. Predominantly nuclear. Partially cytoplasmic.
Tissue Specificity:	Widely expressed with high levels in heart, brain and placenta. Less abundant in lung, kidney and liver.
Similarity:	Belongs to the protein kinase superfamily. AGC Ser/Thr protein kinase family. S6 kinase subfamily.
Storage Condition and Buffer:	Rabbit IgG in phosphate buffered saline , pH 7.4, 150mM NaCl, 0.02% sodium azide and 50% glycerol.Store at -20 °C.Stable for 12 months from date of receipt.



Western blot analysis of MSK1 phosphorylation expression in EGF treated Hela whole cell lysates, The lane on the right is treated with the antigen-specific peptide.



Western blot analysis of MSK1 phosphorylation expression in EGF treated NIH-3T3 whole cell lysates, The lane on the left is treated with the antigen-specific peptide.



Phospho-MSK1 (Ser212) Ab IHC in human testis

IMPORTANT: For western blot, incubate membrane with diluted primary Ab in 5% w/v milk, 1X TBS, 0.1% Tween@20 at 4°C with gentle shaking, overnight.

For Research Use Only. Not for use in diagnostic and therapeutic procedures. Not for resale without express authorization.