

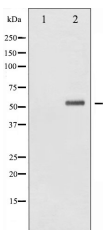
Phospho-Chk2 (Ser516) Ab

Cat.#: AF3035
Size: 100ul,200ul

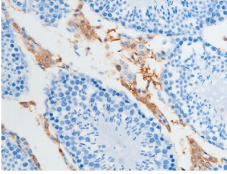
Concn.: 1mg/ml
Source: Rabbit

Mol.Wt.: 62kDa
Clonality: Polyclonal

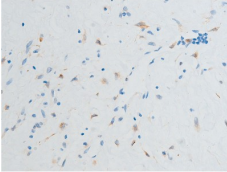
Application:	WB 1:500-1:2000, IF/ICC 1:100-1:500
Reactivity:	Human,Mouse,Rat
Purification:	The Ab is from purified rabbit serum by affinity purification via sequential chromatography on phospho- and non-phospho-peptide affinity columns.
Specificity:	Phospho-Chk2 (Ser516) Ab detects endogenous levels of Chk2 only when phosphorylated at Serine 516.
Immunogen:	A synthesized peptide derived from human Chk2 around the phosphorylation site of Serine 516.
Uniprot:	O96017
Description:	In response to DNA damage and replication blocks, cell cycle progression is halted through the control of critical cell cycle regulators. The protein encoded by this gene is a cell cycle checkpoint regulator and putative tumor suppressor.
Subcellular Location:	Nucleus; Nucleus. Isoform 10 is present throughout the cell and Nucleus > PML body. Nucleus > nucleoplasm. Recruited into PML bodies together with TP53.
Tissue Specificity:	High expression is found in testis, spleen, colon and peripheral blood leukocytes. Low expression is found in other tissues.
Similarity:	Belongs to the protein kinase superfamily. CAMK Ser/Thr protein kinase family. CHK2 subfamily.
Storage Condition and Buffer:	Rabbit IgG in phosphate buffered saline , pH 7.4, 150mM NaCl, 0.02% sodium azide and 50% glycerol.Store at -20 °C.Stable for 12 months from date of receipt.



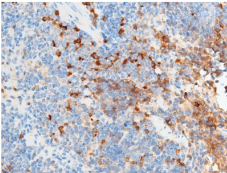
Western blot analysis of Chk2 phosphorylation expression in UV treated HeLa whole cell lysates, The lane on the left is treated with the antigen-specific peptide.



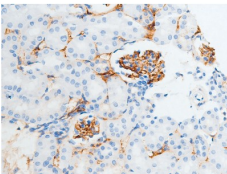
AF3035 at 1/100 staining rat testicular tissue sections by IHC-P. The tissue was formaldehyde fixed and a heat mediated antigen retrieval step in citrate buffer was performed. The tissue was then blocked and incubated with the Ab for 1.5 hours at 22°C. An HRP conjugated goat anti-rabbit Ab was used as the secondary.



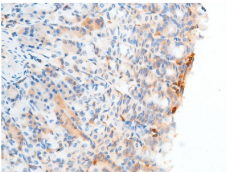
AF3035 at 1/100 staining human glioma tissue sections by IHC-P. The tissue was formaldehyde fixed and a heat mediated antigen retrieval step in citrate buffer was performed. The tissue was then blocked and incubated with the Ab for 1.5 hours at 22°C. An HRP conjugated goat anti-rabbit Ab was used as the secondary.



AF3035 at 1/100 staining mouse spleen tissue sections by IHC-P. The tissue was formaldehyde fixed and a heat mediated antigen retrieval step in citrate buffer was performed. The tissue was then blocked and incubated with the Ab for 1.5 hours at 22°C. An HRP conjugated goat anti-rabbit Ab was used as the secondary.



AF3035 at 1/100 staining mouse kidney tissue sections by IHC-P. The tissue was formaldehyde fixed and a heat mediated antigen retrieval step in citrate buffer was performed. The tissue was then blocked and incubated with the Ab for 1.5 hours at 22°C. An HRP conjugated goat anti-rabbit Ab was used as the secondary.



AF3035 at 1/100 staining mouse gastric tissue sections by IHC-P. The tissue was formaldehyde fixed and a heat mediated antigen retrieval step in citrate buffer was performed. The tissue was then blocked and incubated with the Ab for 1.5 hours at 22°C. An HRP conjugated goat anti-rabbit Ab was used as the secondary.



AF3035 staining 293 by IF/ICC. The sample were fixed with PFA and permeabilized in 0.1% Triton X-100, then blocked in 10% serum for 45 minutes at 25°C. The primary Ab was diluted at 1/200 and incubated with the sample for 1 hour at 37°C. An Alexa Fluor 594 conjugated goat anti-rabbit IgG (H+L) Ab, diluted at 1/600, was used as the secondary Ab.

IMPORTANT: For western blot, incubate membrane with diluted primary Ab in 5% w/v milk , 1X TBS, 0.1% Tween@20 at 4°C with gentle shaking, overnight.

For Research Use Only. Not for use in diagnostic and therapeutic procedures. Not for resale without express authorization.