

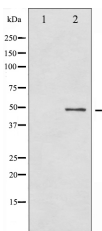
Phospho-GFAP (Ser38) Ab

Cat.#: AF3166
Size: 100ul,200ul

Concn.: 1mg/ml
Source: Rabbit

Mol.Wt.: 50kDa
Clonality: Polyclonal

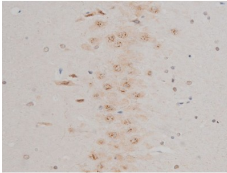
| | |
|-------------------------------|---|
| Application: | WB 1:500-1:2000 IHC 1:50-1:200 IF/ICC 1:100-1:500 |
| Reactivity: | Human,Mouse,Rat |
| Purification: | The Ab is from purified rabbit serum by affinity purification via sequential chromatography on phospho- and non-phospho-peptide affinity columns. |
| Specificity: | Phospho-GFAP (Ser38) Ab detects endogenous levels of GFAP only when phosphorylated at Serine 38. |
| Immunogen: | A synthesized peptide derived from human GFAP around the phosphorylation site of Serine 38. |
| Uniprot: | P14136 |
| Description: | This gene encodes one of the major intermediate filament proteins of mature astrocytes. It is used as a marker to distinguish astrocytes from other glial cells during development. Mutations in this gene cause Alexander disease, a rare disorder of astrocytes in the central nervous system. An additional transcript variant has been described, but its full length sequence has not been determined. |
| Subcellular Location: | Cytoplasm. Associated with intermediate filaments. |
| Tissue Specificity: | Expressed in cells lacking fibronectin. |
| Similarity: | Belongs to the intermediate filament family. |
| Storage Condition and Buffer: | Rabbit IgG in phosphate buffered saline , pH 7.4, 150mM NaCl, 0.02% sodium azide and 50% glycerol.Store at -20 °C.Stable for 12 months from date of receipt. |



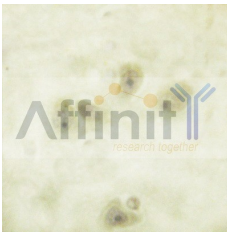
Western blot analysis of GFAP phosphorylation expression in HeLa whole cell lysates,The lane on the left is treated with the antigen-specific peptide.



AF3166 at 1/100 staining mouse brain tissue by IHC-P. The sample was formaldehyde fixed and a heat mediated antigen retrieval step in citrate buffer was performed. The sample was then blocked and incubated with the Ab for 1.5 hours at 22°C. An HRP conjugated goat anti-rabbit Ab was used as the secondary.



AF3166 at 1/200 staining Rat brain tissue sections by IHC-P. The tissue was formaldehyde fixed and a heat mediated antigen retrieval step in citrate buffer was performed. The tissue was then blocked and incubated with the Ab for 1.5 hours at 22°C. An HRP conjugated goat anti-rabbit Ab was used as the secondary.



AF3166 at 1/100 staining human brain tissues sections by IHC-P. The tissue was formaldehyde fixed and a heat mediated antigen retrieval step in citrate buffer was performed. The tissue was then blocked and incubated with the Ab for 1.5 hours at 30°C

IMPORTANT: For western blot, incubate membrane with diluted primary Ab in 5% w/v milk, 1X TBS, 0.1% Tween@20 at 4°C with gentle shaking, overnight.

For Research Use Only. Not for use in diagnostic and therapeutic procedures. Not for resale without express authorization.