

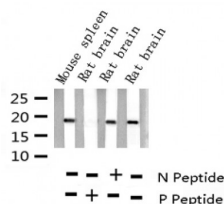
## Phospho-Stathmin 1 (Ser15) Ab

Cat.#: AF3193  
Size: 100ul,200ul

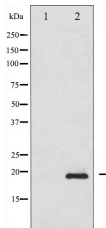
Concn.: 1mg/ml  
Source: Rabbit

Mol.Wt.: 19kDa  
Clonality: Polyclonal

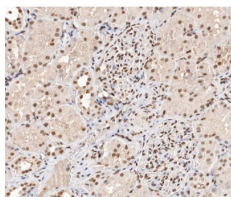
|                               |   |
|-------------------------------|---|
| Application:                  | WB 1:500-1:2000 IHC 1:50-1:200 IF/ICC 1:100-1:500   |
| Reactivity:                   | Human,Mouse,Rat   |
| Purification:                 | The Ab is from purified rabbit serum by affinity purification via sequential chromatography on phospho- and non-phospho-peptide affinity columns.   |
| Specificity:                  | Phospho-Stathmin 1 (Ser15) Ab detects endogenous levels of Stathmin 1 only when phosphorylated at Serine 15.  |
| Immunogen:                    | A synthesized peptide derived from human Stathmin 1 around the phosphorylation site of Serine 15.   |
| Uniprot:                      | P16949  |
| Description:                  | This gene belongs to the stathmin family of genes. It encodes a ubiquitous cytosolic phosphoprotein proposed to function as an intracellular relay integrating regulatory signals of the cellular environment.  |
| Subcellular Location:         | Cytoplasm > cytoskeleton.   |
| Tissue Specificity:           | Ubiquitous. Expression is strongest in fetal and adult brain, spinal cord, and cerebellum, followed by thymus, bone marrow, testis, and fetal liver. Expression is intermediate in colon, ovary, placenta, uterus, and trachea, and is readily detected at substantially lower levels in all other tissues examined. Lowest expression is found in adult liver. Present in much greater abundance in cells from patients with acute leukemia of different subtypes than in normal peripheral blood lymphocytes, non-leukemic proliferating lymphoid cells, bone marrow cells, or cells from patients with chronic lymphoid or myeloid leukemia. |
| Similarity:                   | Belongs to the stathmin family.   |
| Storage Condition and Buffer: | Rabbit IgG in phosphate buffered saline , pH 7.4, 150mM NaCl, 0.02% sodium azide and 50% glycerol.Store at -20 °C.Stable for 12 months from date of receipt.  |



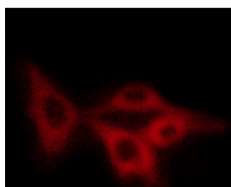
Western blot analysis of Phospho-Stathmin 1 (Ser15) expression in various lysates



Western blot analysis of Stathmin 1 phosphorylation expression in 293 whole cell lysates, The lane on the left is treated with the antigen-specific peptide.



AF3193 at 1/200 staining human kidney tissue sections by IHC-P. The tissue was formaldehyde fixed and a heat mediated antigen retrieval step in citrate buffer was performed. The tissue was then blocked and incubated with the Ab for 1.5 hours at 22°C. An HRP conjugated goat anti-rabbit Ab was used as the secondary.



AF3193 staining COS7 cells by ICC/IF. Cells were fixed with PFA and permeabilized in 0.1% saponin prior to blocking in 10% serum for 45 minutes at 37°C. The primary Ab was diluted 1/400 and incubated with the sample for 1 hour at 37°C. A Alexa Fluor® 594 conjugated goat polyclonal to rabbit IgG (H+L), diluted 1/600 was used as secondary Ab.

**IMPORTANT:** For western blot, incubate membrane with diluted primary Ab in 5% w/v milk, 1X TBS, 0.1% Tween@20 at 4°C with gentle shaking, overnight.

For Research Use Only. Not for use in diagnostic and therapeutic procedures. Not for resale without express authorization.