

## Phospho-STAT5B (Ser731) Ab

Cat.#: AF3340  
Size: 100ul,200ul

Concn.: 1mg/ml  
Source: Rabbit

Mol.Wt.: 90kDa  
Clonality: Polyclonal

Application: WB 1:500-1:2000 IHC 1:50-1:200

Reactivity: Human, Mouse, Rat

Purification: The Ab is from purified rabbit serum by affinity purification via sequential chromatography on phospho- and non-phospho-peptide affinity columns.

Specificity: Phospho-STAT5B (Ser731) Ab detects endogenous levels of STAT5B only when phosphorylated at Serine 731.

Immunogen: A synthesized peptide derived from human STAT5B around the phosphorylation site of Serine 731.

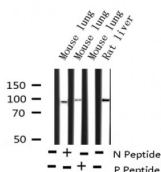
Uniprot: P51692

Description: The protein encoded by this gene is a member of the STAT family of transcription factors. In response to cytokines and growth factors, STAT family members are phosphorylated by the receptor associated kinases, and then form homo- or heterodimers that translocate to the cell nucleus where they act as transcription activators. This protein mediates the signal transduction triggered by various cell ligands, such as IL2, IL4, CSF1, and different growth hormones.

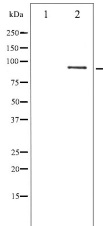
Subcellular Location: Cytoplasm. Nucleus. Translocated into the nucleus in response to phosphorylation.

Similarity: Belongs to the transcription factor STAT family.

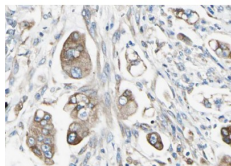
Storage Condition and Buffer: Rabbit IgG in phosphate buffered saline , pH 7.4, 150mM NaCl, 0.02% sodium azide and 50% glycerol. Store at -20 °C. Stable for 12 months from date of receipt.



Western blot analysis of Phospho-STAT5B (Ser731) expression in various lysates



Western blot analysis of STAT5B phosphorylation expression in RAW264.7 whole cell lysates, The lane on the left is treated with the antigen-specific peptide.



AF3340 at 1/100 staining human Stomach cancer tissue sections by IHC-P. The tissue was formaldehyde fixed and a heat mediated antigen retrieval step in citrate buffer was performed. The tissue was then blocked and incubated with the Ab for 1.5 hours at 22°C. An HRP conjugated goat anti-rabbit Ab was used as the secondary.

**IMPORTANT:** For western blot, incubate membrane with diluted primary Ab in 5% w/v milk , 1X TBS, 0.1% Tween@20 at 4°C with gentle shaking, overnight.

For Research Use Only. Not for use in diagnostic and therapeutic procedures. Not for resale without express authorization.