

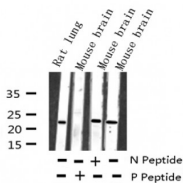
Phospho-RhoA (Ser188) Ab

Cat.#: AF3352
Size: 100ul,200ul

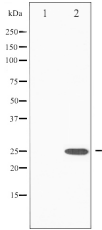
Concn.: 1mg/ml
Source: Rabbit

Mol.Wt.: 22kDa
Clonality: Polyclonal

Application:	WB 1:500-1:2000
Reactivity:	Human,Mouse,Rat
Purification:	The Ab is from purified rabbit serum by affinity purification via sequential chromatography on phospho- and non-phospho-peptide affinity columns.
Specificity:	Phospho-RhoA (Ser188) Ab detects endogenous levels of RhoA only when phosphorylated at Serine 188.
Immunogen:	A synthesized peptide derived from human RhoA around the phosphorylation site of Serine 188.
Uniprot:	P61586
Description:	RhoA is a small G protein of the Rho family. Regulates a signal transduction pathway linking plasma membrane receptors to the assembly of focal adhesions and actin stress fibers.
Subcellular Location:	Cell membrane. Cytoplasm > cytoskeleton.
Similarity:	The basic-rich region is essential for yopT recognition and cleavage.Belongs to the small GTPase superfamily. Rho family.
Storage Condition and Buffer:	Rabbit IgG in phosphate buffered saline , pH 7.4, 150mM NaCl, 0.02% sodium azide and 50% glycerol.Store at -20 °C.Stable for 12 months from date of receipt.



Western blot analysis of Phospho-RhoA (Ser188) expression in various lysates



Western blot analysis of RhoA phosphorylation expression in HeLa whole cell lysates, The lane on the left is treated with the antigen-specific peptide.

IMPORTANT: For western blot, incubate membrane with diluted primary Ab in 5% w/v milk, 1X TBS, 0.1% Tween@20 at 4°C with gentle shaking, overnight.

For Research Use Only. Not for use in diagnostic and therapeutic procedures. Not for resale without express authorization.