

Phospho-AMPK alpha (Thr172) Ab

Cat.#: AF3423	Concn.: 1mg/ml	Mol.Wt.: 62kDa
Size: 100ul,200ul	Source: Rabbit	Clonality: Polyclonal

Application: WB 1:500-1:2000 IHC 1:50-1:200 IF 1:100-500

Reactivity: Human,Mouse,Rat

Purification: The Ab is from purified rabbit serum by affinity purification via sequential chromatography on phospho- and non-phospho-peptide affinity columns.

Specificity: Phospho-AMPK alpha (Thr172) Ab detects endogenous levels of AMPK alpha only when phosphorylated at Threonine 172.

Immunogen: A synthesized peptide derived from human AMPK alpha around the phosphorylation site of Threonine 172.

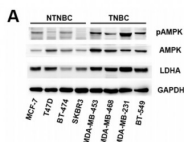
Uniprot: Q13131/P54646

Description: AMPKA2 a protein kinase of the CAMKL family. The holoenzyme consists of a catalytic subunit (alpha) and two regulatory subunits (beta, gamma).

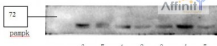
Subcellular Location: Nucleus;

Similarity: The AIS (autoinhibitory sequence) region shows some sequence similarity with the ubiquitin-associated domains and represses kinase activity.Belongs to the protein kinase superfamily. CAMK Ser/Thr protein kinase family. SNF1 subfamily.

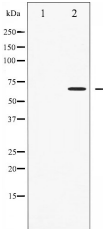
Storage Condition and Buffer: Rabbit IgG in phosphate buffered saline , pH 7.4, 150mM NaCl, 0.02% sodium azide and 50% glycerol.Store at -20 °C.Stable for 12 months from date of receipt.



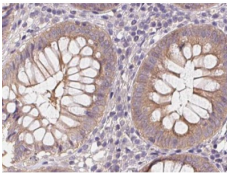
High expressions of LDHA and AMPK as prognostic biomarkers for breast cancer



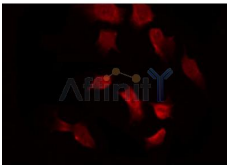
This image is a courtesy of anonymous review



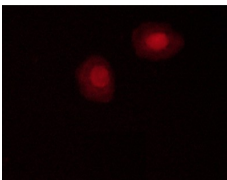
Western blot analysis of AMPK alpha phosphorylation expression in Heatshock treated 293 whole cell lysates, The lane on the left is treated with the antigen-specific peptide.



Phospho-AMPK alpha (Thr172) Ab for IHC in human colon.



AF3423 staining 293 by IF/ICC. The sample were fixed with PFA and permeabilized in 0.1% Triton X-100, then blocked in 10% serum for 45 minutes at 25°C. The primary Ab was diluted at 1/200 and incubated with the sample for 1 hour at 37°C. An Alexa Fluor 594 conjugated goat anti-rabbit IgG (H+L) Ab, diluted at 1/600, was used as the secondary Ab.



af3423 staining C2C12 cells by ICC/IF. Cells were fixed with PFA and permeabilized in 0.1% saponin prior to blocking in 10% serum for 45 minutes at 37°C. The primary Ab was diluted 1/400 and incubated with the sample for 1 hour at 37°C. A Alexa Fluor 594 conjugated goat polyclonal to rabbit IgG (H+L), diluted 1/600 was used as secondary Ab.

IMPORTANT: For western blot, incubate membrane with diluted primary Ab in 5% w/v milk, 1X TBS, 0.1% Tween@20 at 4°C with gentle shaking, overnight.

For Research Use Only. Not for use in diagnostic and therapeutic procedures. Not for resale without express authorization.