

## Cleaved Caspase-1 (Arg317) /P10 Ab

Cat.#: AF4022  
Size: 50ul,100ul,200ul

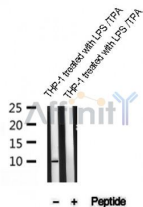
Concn.: 1mg/ml  
Source: Rabbit

Mol.Wt.: 10kDa  
Clonality: Polyclonal

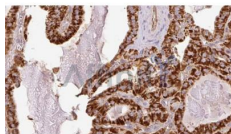
Application:	WB 1:500-1:2000, IHC 1:50-1:200
Reactivity:	Human,Mouse,Rat
Purification:	The antiserum was purified by peptide affinity chromatography using SulfoLink™ Coupling Resin (Thermo Fisher Scientific).
Specificity:	Caspase 1 (p10,Cleaved-Arg317) Ab detects endogenous levels of fragment of activated Caspase 1 resulting from cleavage adjacent to Arg317.
Immunogen:	The antiserum was produced against synthesized peptide derived from human Caspase 1.
Uniprot:	P29466
Subcellular Location:	Cytoplasm.
Tissue Specificity:	Expressed in larger amounts in spleen and lung. Detected in liver, heart, small intestine, colon, thymus, prostate, skeletal muscle, peripheral blood leukocytes, kidney and testis. No expression in the brain.
Similarity:	Belongs to the peptidase C14A family.
Storage Condition and Buffer:	Rabbit IgG in phosphate buffered saline , pH 7.4, 150mM NaCl, 0.02% sodium azide and 50% glycerol.Store at -20 °C.Stable for 12 months from date of receipt.



Western blot analysis of AF4022 expression in various lysates



Western blot analysis of Cleaved Caspase-1 on THP-1 cells lysate (treated with TPA/LPS) using Cleaved Caspase-1 (Arg317) /P10 Ab



AF4022 at 1/100 staining Human thyroid cancer tissue by IHC-P. The sample was formaldehyde fixed and a heat mediated antigen retrieval step in citrate buffer was performed. The sample was then blocked and incubated with the Ab for 1.5 hours at 22°C. An HRP conjugated goat anti-rabbit Ab was used as the secondary.

**IMPORTANT:** For western blot, incubate membrane with diluted primary Ab in 5% w/v milk , 1X TBS, 0.1% Tween@20 at 4°C with gentle shaking, overnight.

For Research Use Only. Not for use in diagnostic and therapeutic procedures. Not for resale without express authorization.